



**Level 13/87 Liverpool Street Sydney NSW**

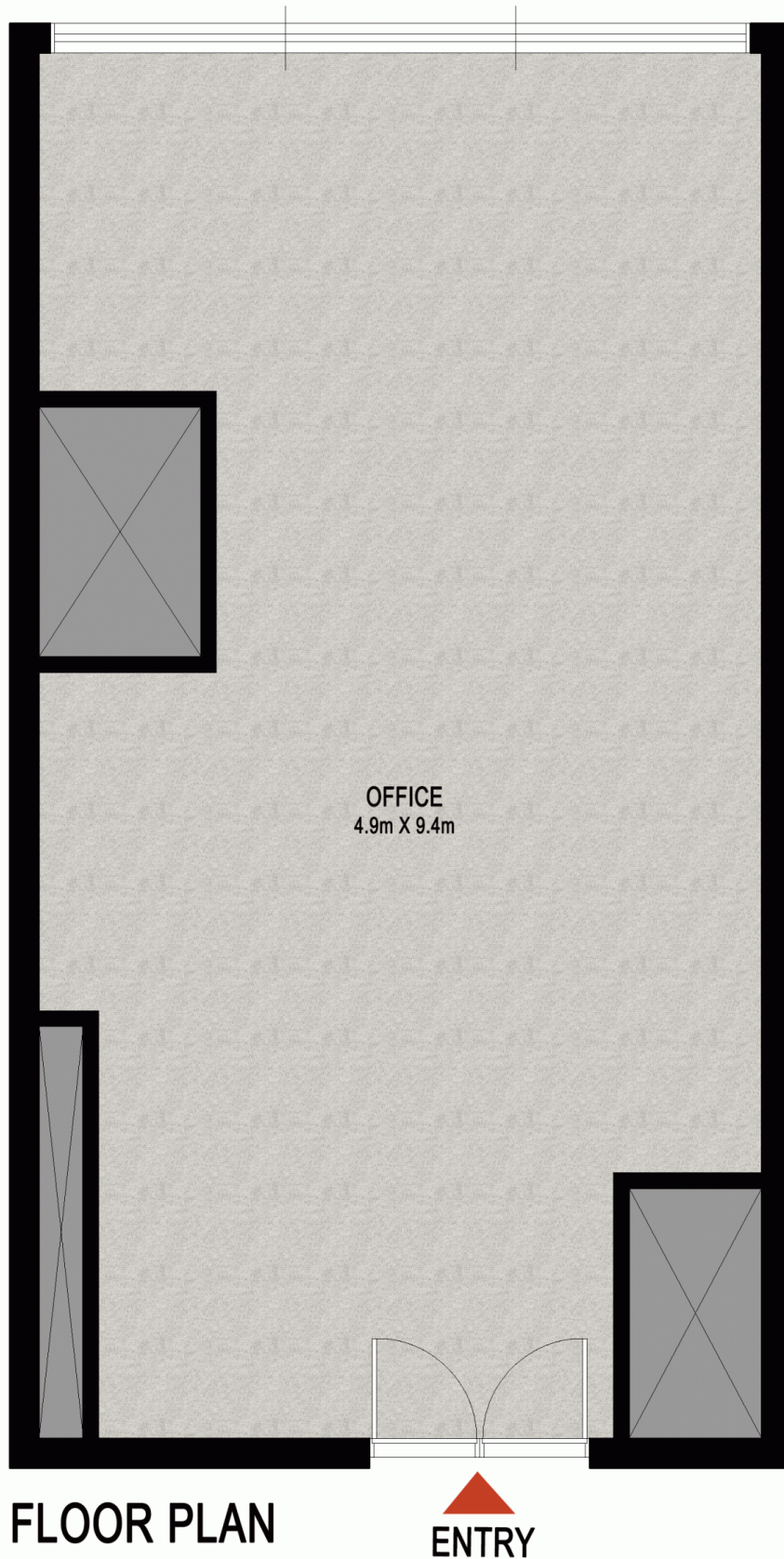
- \* Approx 41m2 executive office
- \* One partitioned manager/board room
- \* Timber feature wall dividing the entrance and open plan working zone
- \* Extra high ceiling
- \* Double side front doors
- \* Ample natural light from the north aspect, overlooking Local Court and city skyline.

**Building Size** : 41 sqm  
**View** : <https://www.drakeproperty.com/lease/nsw/sydney-city/sydney/commercial/offices/5723756>

It looks bigger than its actual size!

The renowned World Tower has become one of the most vibrant business hub in Sydney CBD, accommodating a good mixed of residential apartments, retails and professional office suites. Its name is conveying an outmatching value to commercial tenants. The luxurious recreational facilities are adding more plus to your business





APPROX. AREA

INTERNAL AREA:	40.8m <sup>2</sup>
HEIGHT:	3.4m

## 1305/87 Liverpool Street, Sydney

The floor plan is shown for view purposes only and is not part of any legal document. All measurements and figures are approximate and not to scale.  
Floor plan by CNK PLAN/ M:0432 417 547/ E: [cnkplan@cnkplan.com.au](mailto:cnkplan@cnkplan.com.au)/ [www.cnkplan.com.au](http://www.cnkplan.com.au)