



Level 1/16/650 George Street Sydney NSW

Location

The property is located towards the western end of George Street in the World Square complex on the corner of George and Liverpool Streets. Town Hall and Museum train station and the Law courts are all located in the immediate vicinity.

Description

650 George Street is a new five level building, part of the prestigious World Square retail and commercial development. High quality finishes include two lifts, security access, separately air-conditioned suites and male and female amenities with shower facilities. Currently Tenanted til September 2016 with rent of \$35,300 (GST Included)

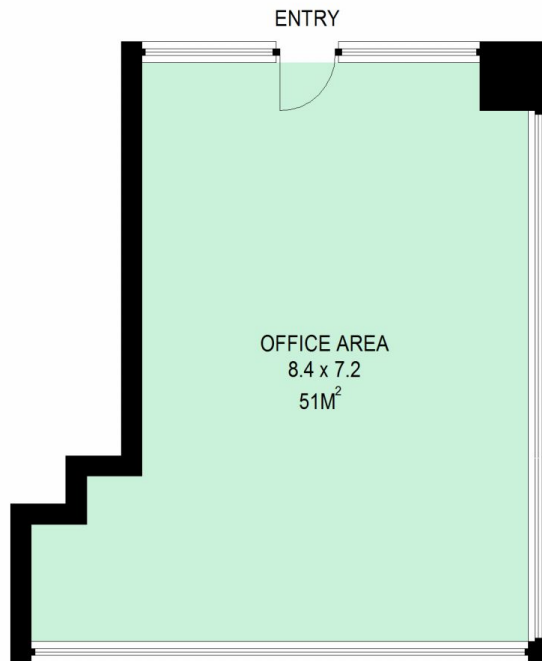
Building Size : 51 sqm

View : <https://www.drakeproperty.com/sale/nsw/sydney-city/sydney/commercial/offices/5723758>



Joshua Kim
0408 422 771

Auction



FIRST FLOOR

Suite 16, 650 George Street, Sydney

This information is not to be relied upon.

It is strictly for marketing & illustration purposes only.

All measurements are approximate. Not to scale.

No liability accepted.

You must rely on your own inquiries and seek advice from your solicitor.(ID226764)

