



Level 5/503&504/379 Pitt Street Sydney NSW

The adjoining suites are located on the south east corner of 379 Pitt Street on Level 5. It features:

- * Excellent natural light
- * Direct lift exposure
- * Reception, 3 enclosed offices, 1 large board room, 2 generous operation sites, 1 kitchen and additional storage area
- * Equipped with a filing compactus, alarm system
- * The board room is cabled to accommodate webinars

In order to relocate, the vendor requires a 6 month lease back.

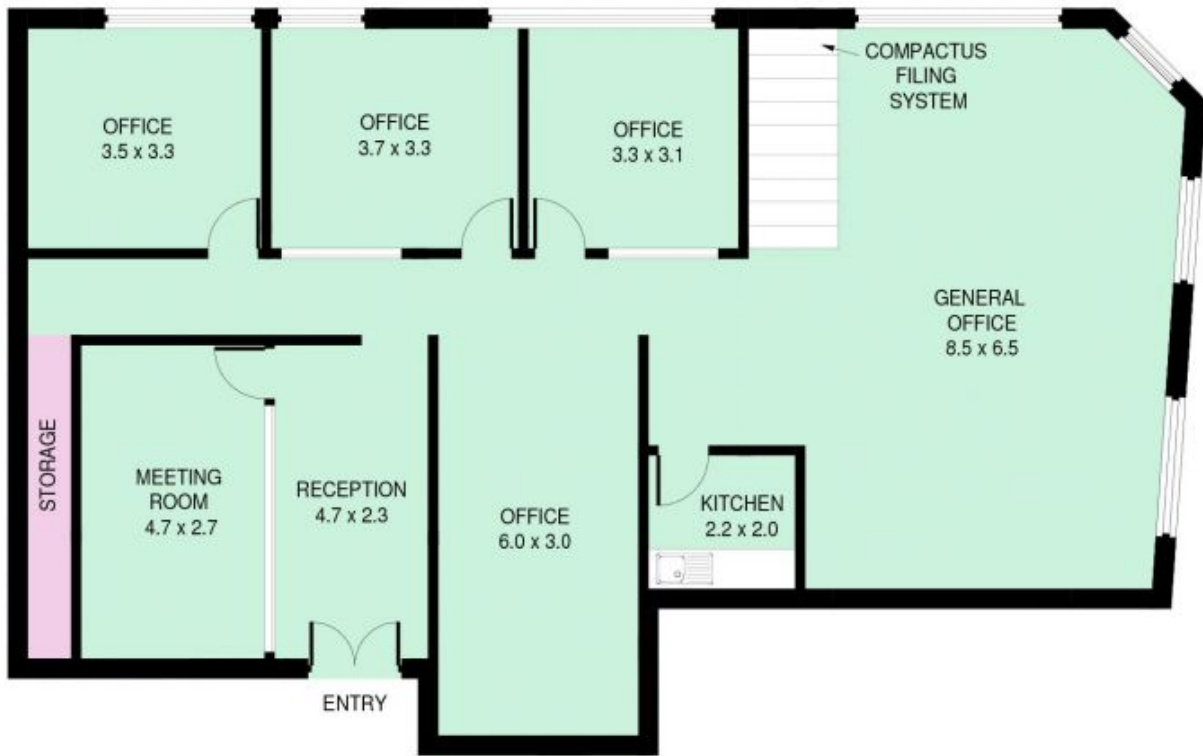
Location:

The property is located at the corner of Pitt and Liverpool Streets, close to World Square, Local Court, Town Hall and

Price : \$ 1,350,000
Building Size : 150 sqm
View : <https://www.drakeproperty.com/sale/nsw/sydney-city/sydney/commercial/offices/5723802>



Nicholas Drake
02 9283 6280



Suites 503 & 504, 379 Pitt Street, Sydney

This information is not to be relied upon.
It is strictly for marketing & illustration purposes only.
All measurements are approximate. Not to scale.
No liability accepted.
You must rely on your own inquiries and seek advice from your solicitor. (ID311679)

