



Level 5/501/379 Pitt Street Sydney NSW

- *68sqm
- *Quality Fit out with 3 Rooms + Reception
- *Ample natural light
- *Suitable for legal practitioners, accountants, tax agents and all other professionals
- *Near train stations, Downing Centre & World Square.

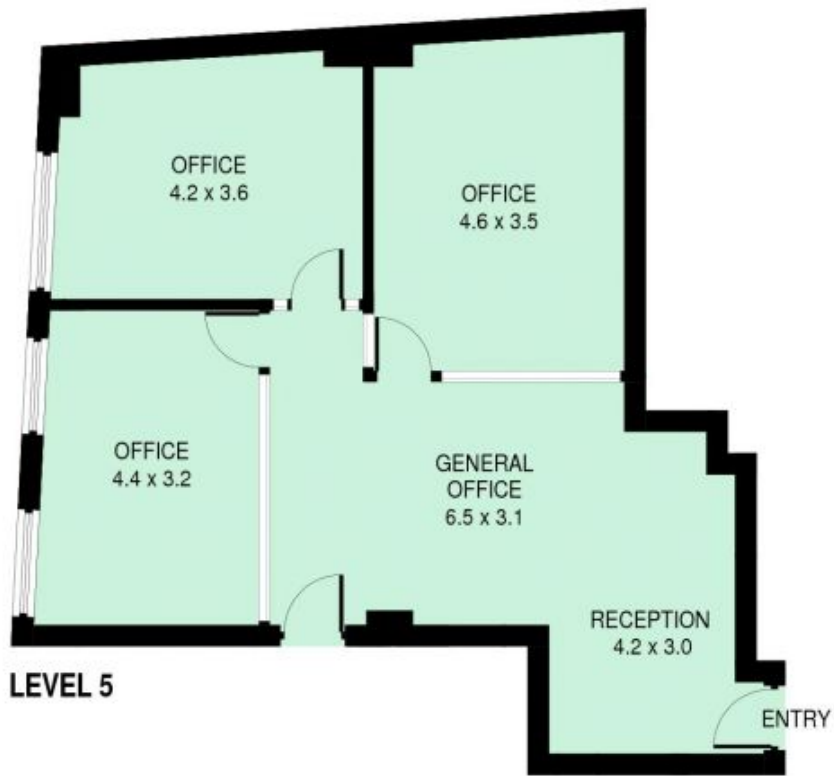
- Building Size** : 68 sqm
- Land Size** : 68 sqm
- View** : <https://www.drakeproperty.com/lease/nsw/sydney-city/sydney/commercial/offices/5723826>

Fayworth House, 379-383 Pitt Street is located on the corner of Pitt and Liverpool Streets directly opposite World Square and close to the Downing Street Law Courts. A few minutes walk to Town Hall and Museum Stations. The building is under a major exterior upgrading.

For more information or to arrange an inspection, please contact Samuel on 0408422771.



Nicholas Drake
02 9283 6280



Suite 501 / 379 Pitt Street, Sydney

This information is not to be relied upon.

It is strictly for marketing & illustration purposes only.

All measurements are approximate. Not to scale.

No liability accepted.

You must rely on your own inquiries and seek advice from your solicitor.(ID414282)

