

Level 3/42/650 George Street Street Sydney NSW

Starting up a business?
Need a little creative space in the vibrant World Square?
Here is your new office ready for you to move in immediately:

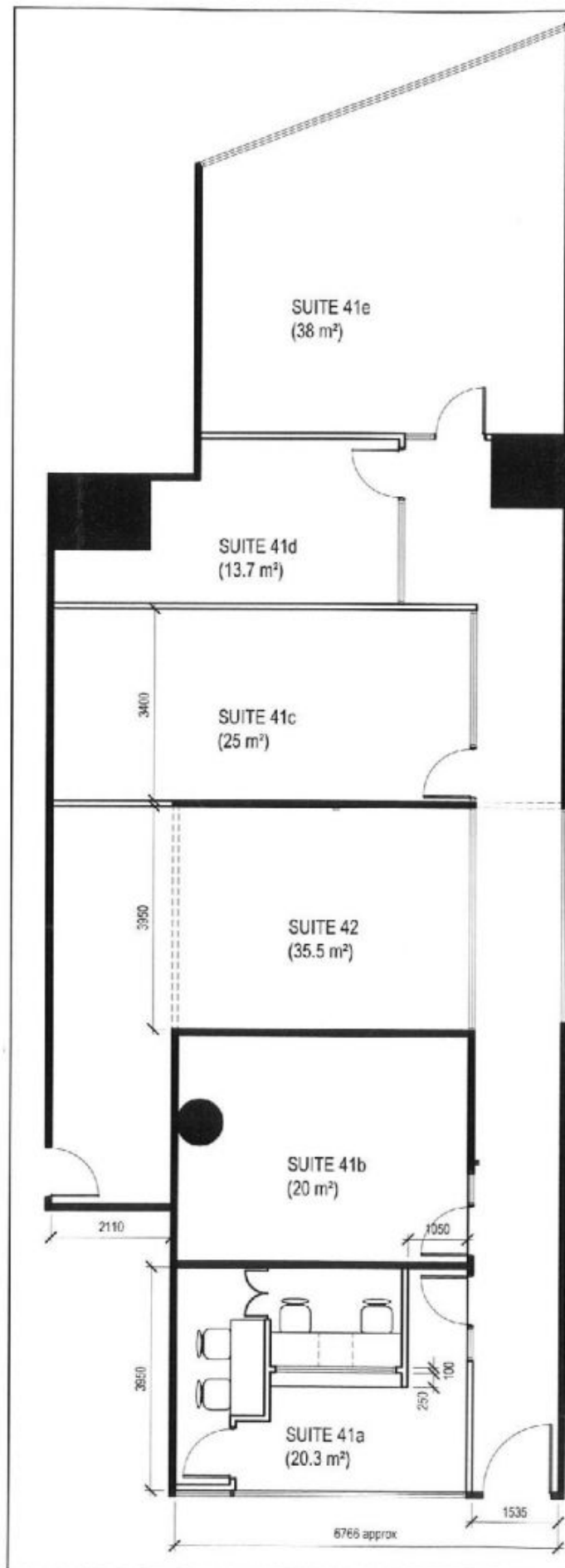
- 35.5sqm approx.
- L shape office
- Two entrances
- Outgoings and ELECTRICITY included in rent
- 24hr security access
- High ceiling

Please contact Joshua on 0408 422 771 for inspection.

Price : Contract Agent
Building Size : 35.5 sqm
Land Size : 35.5 sqm
View : <https://www.drakeproperty.com/lease/nsw/sydney-city/sydney/commercial/offices/5723878>



Nicholas Drake
02 9283 6280



PARTITION LEGEND

- FULL HEIGHT SOLID
 FULL HEIGHT GLASS

Legend

CLIENT

GEOFF LOWE & ASSOCIATES
Suite 41, 650 George Street
Sydney NSW 2000

AXIOM Fitout Group
31 Richmond Road
Homebush West NSW 2140
Phone: (02) 9746 0101

(C) COPYRIGHT. THIS DOCUMENT IS OWNED BY, AND THE INFORMATION CONTAINED IN IT IS PROPRIETARY TO AXIOM OFFICE INTERIORS. BY RECEIPT HEREOF THE HOLDER AGREES NOT TO USE THE INFORMATION, DISCLOSE IT TO ANY THIRD PARTY, NOR REPRODUCE THIS DOCUMENT WITHOUT PRIOR WRITTEN CONSENT OF AXIOM OFFICE INTERIORS, AND AGREES TO RETURN THIS DOCUMENT FORTHWITH UPON REQUEST. CONTRACTOR TO VERIFY DIMENSIONS PRIOR TO CONSTRUCTION. DO NOT SCALE OFF DRAWING.

DATE	02.03.2009	DRAWN	AL
SCALE	1 : 100	DRAWING NO.	CE-01
QUOTE SCHEDULE NO.	Q 07227	REVISION	A
DWG TITLE	OFFICE LAYOUT		