

WF/99 Bathurst Street Sydney NSW

- ? Unique Opportunity Whole Floor 692 m2 Plus Car Space
- ? 360 Degree Immaculate City View
- ? Grand Reception Area with Luxurious Desk with Marble floor all around
- ? Two internal Kitchens & Shower
- ? Glazing Partitions with Executive Rooms, Board Rooms, & Arrogant Function Hall

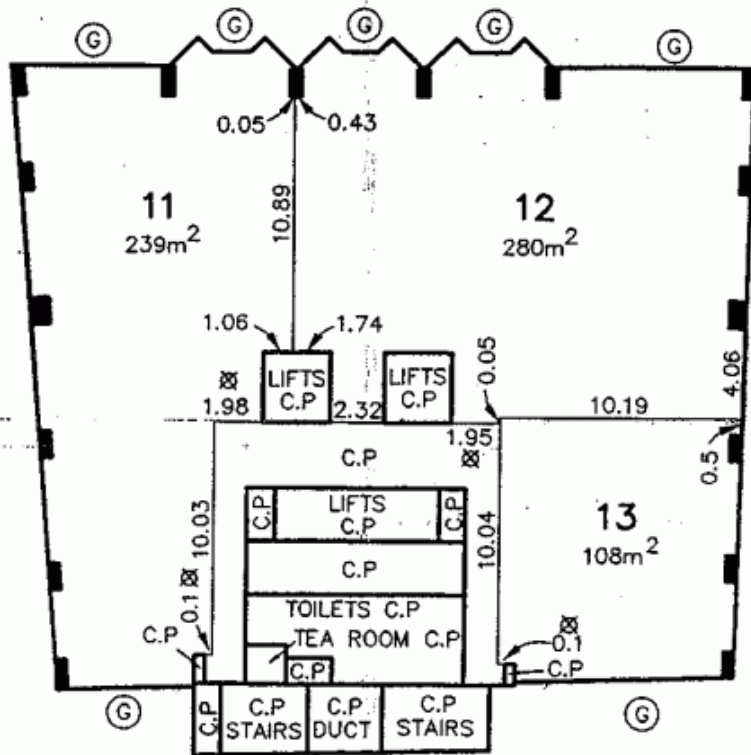
Sovereign Centre is a modern commercial building that provides a unique opportunity for your company to mark your place in the exciting Midtown precinct. The whole building has a complete refurbishment of the interior with glass facade and five passenger lifts servicing the entire property. Sovereign centre enjoys natural light from all four sides, ample on-site parking and exceptional views.

The location is very convenient as it directly opposite Town

Price : Contact Agent pa
Building Size : 692 sqm
View : <https://www.drakeproperty.com/lease/nsw/sydney-city/sydney/commercial/offices/5723930>



Joshua Kim
0408 422 771



LEVEL 5

ALL AREAS ARE APPROXIMATE ONLY

C.P. - DENOTES COMMON PROPERTY