

418 Pitt Street Sydney NSW

- * Lock up garage available on 418 Pitt Street
- * Rent \$450.00 per calander month (GST inclusive)
- * Close to Central Station, Chinatown and World Square, minutes walk to Town Hall
- * Entrance off Castlereagh Street

Price : Contact agent
Building Size : 15 sqm
View : <https://www.drakeproperty.com/lease/nsw/sydney-city/sydney/commercial/other/5723971>

For Detailed Info, Please contact Josh 0408 422 771



Joshua Kim
0408 422 771

PARKING LEVEL 2

PT 139
(110m²)

PT 138
(15m²)

PT 58
(15m²)

PT 145
(49m²)

COMMON PROPERTY

PT 141
(17m²)

PT 151
(14m²)

145
(m²)
.99

120
(m²)

RAMP

P RAMP

3-01
87

3

7-05

5-43

5-7

1-79

1-45

2-77

5-46

2-92

2-77

3-15

3-06

0-23

0-85

5-99

0-15

0-24

5-23

2-84

2-42

87

3-27

2-6

2-67

2-58

145

120

17m²

14m²

m²

m²

5-45

87

145

120

17m²

14m²

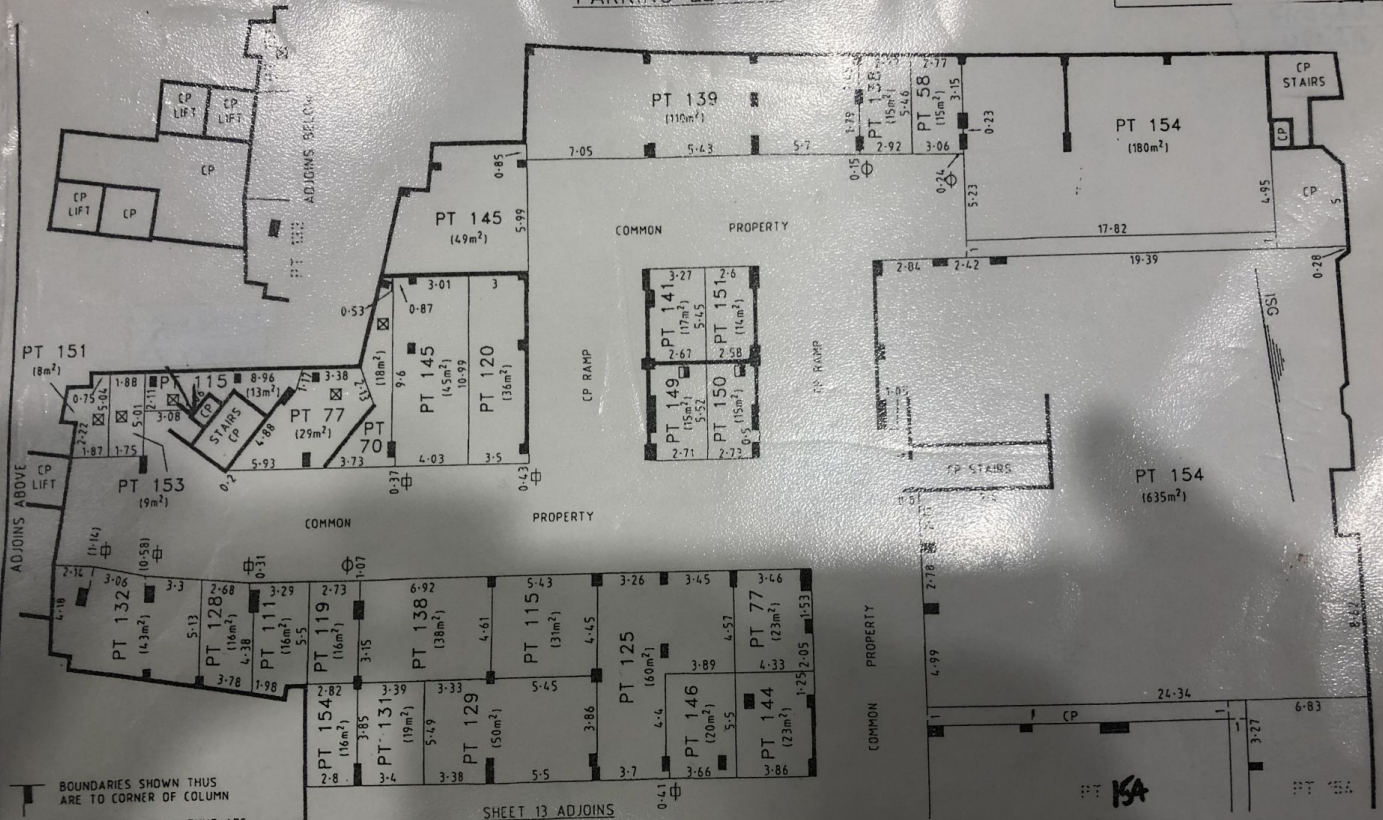
m²

m²

5-45

PARKING LEVEL 2

STRATA PLAN 56443



OFFICE USE ONLY

BOUNDARIES SHOWN THUS ARE TO CORNER OF COLUMN
 BOUNDARIES SHOWN THUS ARE TO CENTRE OF COLUMN AT FACE UNLESS OTHERWISE SHOWN

☒ DENOTES STORE
 CP DENOTES COMMON PROPERTY
 ALL AREAS ARE APPROXIMATE

SHEET 13 ADJOINS

☒ DENOTES BOUNDARY IS SOUTH FACE OF CONC WALL
 ○ DENOTES APPROXIMATION OF CENTRE OF COLUMN
 ○ DENOTES PROLONGATION OF FACE OF COLUMN

Reduction Ratio 1: 200

Lengths are in metres

Margaret Ann Field
 Surveyor Registered under Surveyors Act 1929
 SURVEYOR'S REFERENCE: 119626

Glennally
 General Manager/Authorized Person