



Level 5/501/379 Pitt Street Sydney NSW

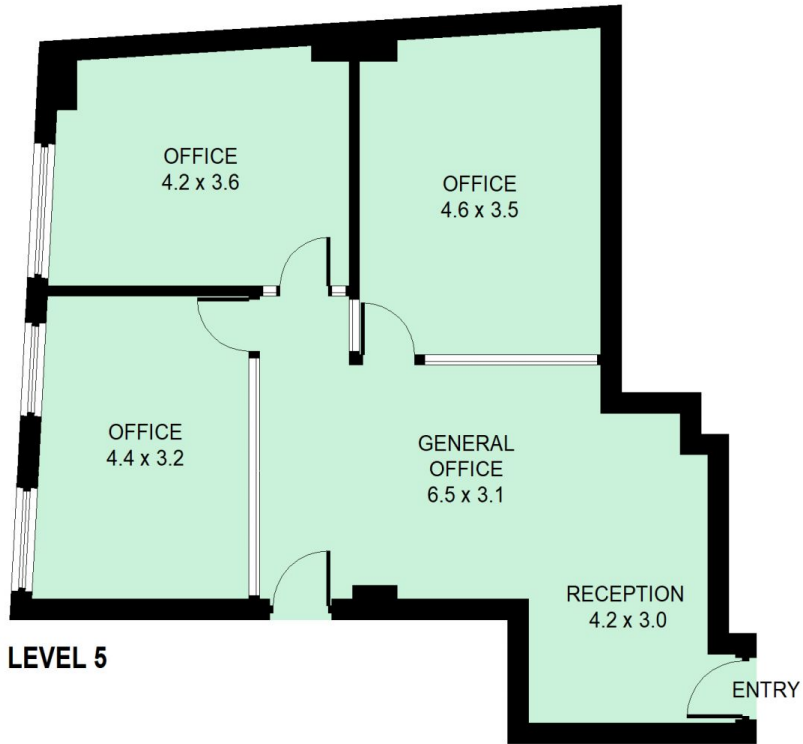
- * Premium commercial office overlooking World Square
- * Quality fit out, reception, three rooms with generous size
- * Large windows, excellent natural light
- * NBN ready building
- * Tenancy details on application

Price : Price on Application
Building Size : 68 sqm
Land Size : 68 sqm
View : <https://www.drakeproperty.com/sale/nsw/sydney-city/sydney/commercial/offices/6003759>

Location:

The property is located at the corner of Pitt and Liverpool Streets, close to World Square, Local Court, Town Hall and Museum. The area boasts the highest residential density in Australia, with further residential and hotel developments proposed nearby. It's considered as one of the busiest precincts in Sydney CBD.

Fayworth House comprises a six storey building built circa 1910. The building was substantially refurbished in 1995, and subsequently strata subdivided into 5 retail shops and



Suite 501 / 379 Pitt Street, Sydney

This information is not to be relied upon.
It is strictly for marketing & illustration purposes only.
All measurements are approximate. Not to scale.
No liability accepted.



You must rely on your own inquiries and seek advice from your solicitor. (ID414282)