



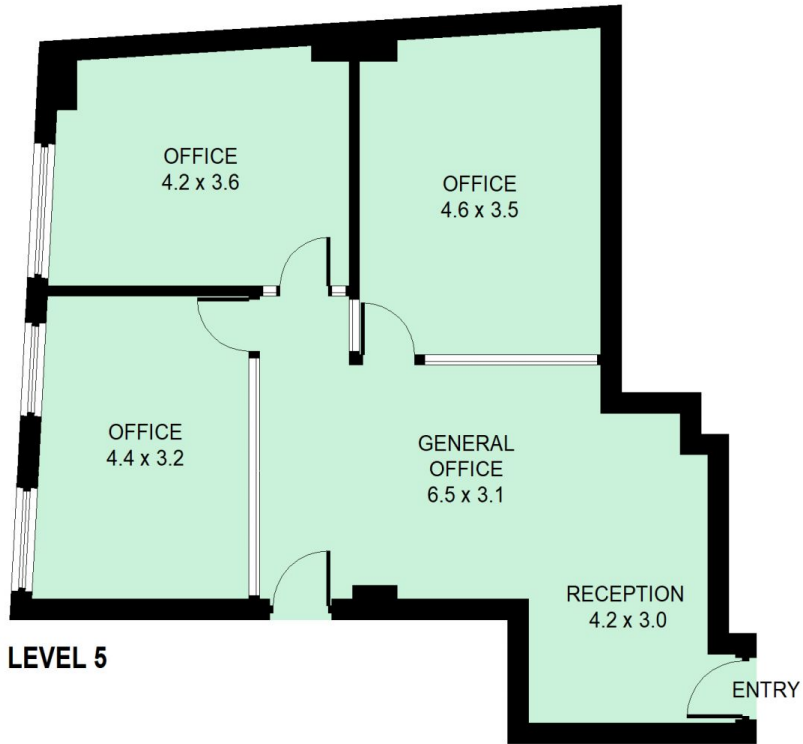
Level 5/501/379 Pitt Street Sydney NSW

- * Premium commercial office overlooking World Square
- * Approximately 68 sqm
- * Affordable rent
- * Quality fit out, reception area, three rooms with generous size
- * Large windows, excellent natural light
- * Direct lift exposure
- * NBN ready building

Price : Contact Agent
Building Size : 68 sqm
Land Size : 68 sqm
View : <https://www.drakeproperty.com/lease/nsw/sydney-city/sydney/commercial/offices/6010056>

Location:

The property is located at the corner of Pitt and Liverpool Streets, close to World Square, Local Court, Town Hall and Museum. The area boasts the highest residential density in Australia, with further residential and hotel developments proposed nearby. It's considered as one of the busiest precincts in Sydney CBD.



Suite 501 / 379 Pitt Street, Sydney

This information is not to be relied upon.
It is strictly for marketing & illustration purposes only.
All measurements are approximate. Not to scale.
No liability accepted.



You must rely on your own inquiries and seek advice from your solicitor. (ID414282)