



Level LowerGroun/516 Kent Street Sydney NSW

Prime Retail Site for Lease in Town Hall Precinct, Attention Bike Shop Owners

*399 sqm Area includes Lower ground 326 sqm, Basement 33 sqm and Mezzanine 40 sqm

*Vibrant Town Hall precinct, back of Event Cinema

*Most sought after CBD Town Hall location for General Retail, Medical, Entertainment

*Monstrous foot traffic for 24/7

*Unbelievable Long Operation Hours

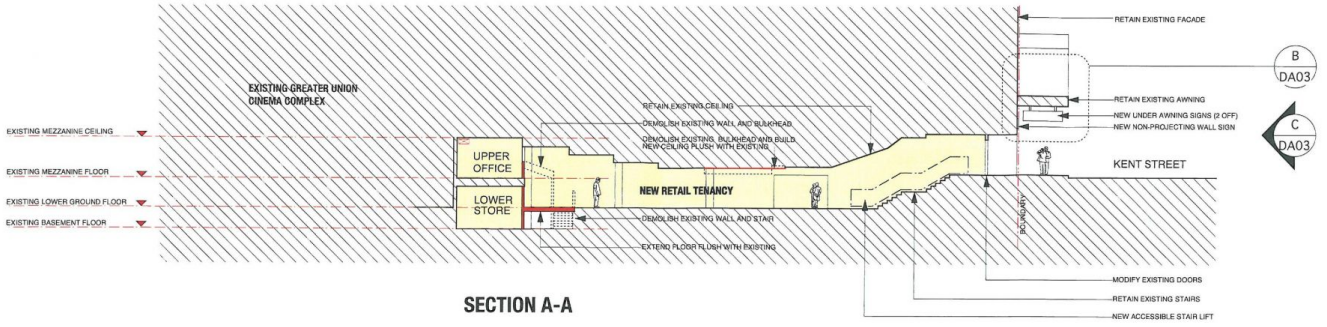
*Great Street Exposure

*Affordable rent

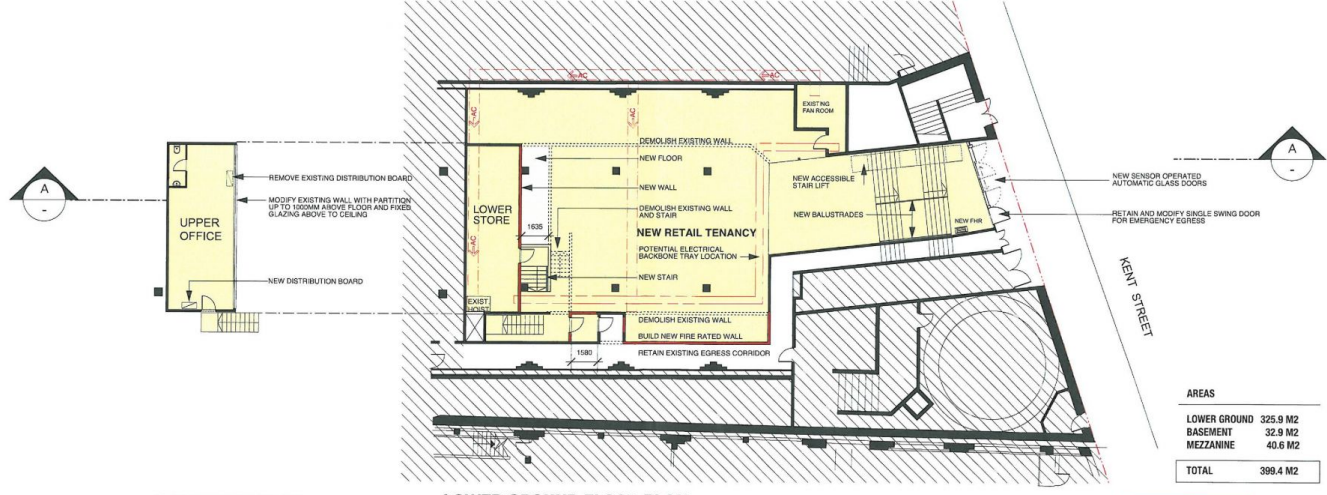
*Convenient public access, close to Town Hall, Chinatown, Darling Harbor

For Detailed Information, please contact David on 0492 92 9791

Price : Contact Agent pa
Building Size : 399 sqm
View : <https://www.drakeproperty.com/lease/nsw/sydney-city/sydney/commercial/retail/6012101>



SECTION A-A



MEZZANINE PLAN

LOWER GROUND FLOOR PLAN

DRAFT ISSUE 15.9.08

	<p>BEN GILES ARCHITECT RAIA ABR: 6127 3/1 FARRELL AVENUE DARLINGHURST NSW 2010 AUSTRALIA PHONE: 0412 599 468 EMAIL: ben@gilesarchitect.com.au</p>	PROJECT	ALTERATIONS TO GREATER UNION CINEMA 6	TITLE	PROPOSED PLANS + SECTION
		SITE	505-525 GEORGE STREET SYDNEY	NUMBER	DA.02
		CLIENT	AMALGAMATED HOLDINGS LIMITED	DATE	AUGUST '08
		JOB NO	2008-13	SCALE	1:200 @ A3