



Level 7/703/370 Pitt Street Sydney NSW

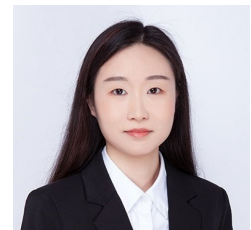
Contemporary style, modern office in "the Chambers" is offered for lease. With close proximity to Town Hall, Museum, Local Courts and World Square, it will appeal to small or medium size, professional practice searching for quality and convenience.

It features:

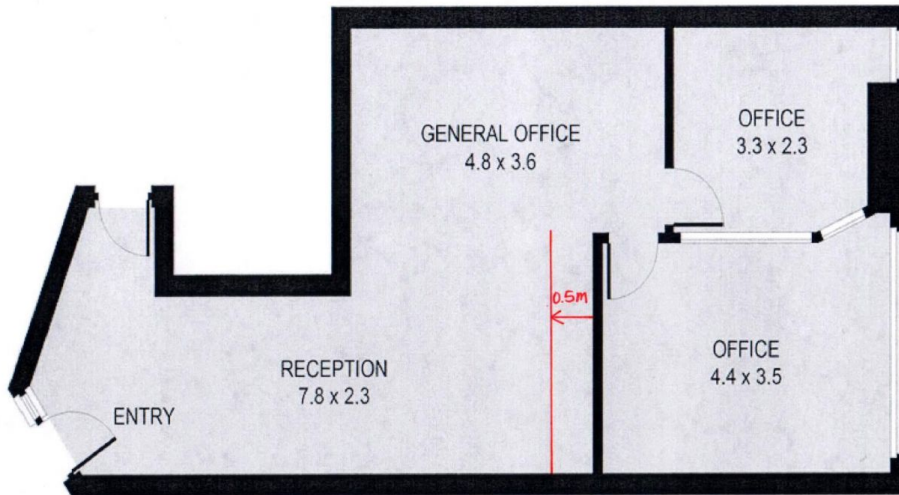
- * Approx. 58sqm
- * One board room and one manager room, each enjoying natural light
- * Reception plus open area
- * Secure and exceptionally well maintained building

The Chambers is an 18 story building comprising 15 office floors above 2 retail floors and a shopping arcade which inter-connects with the property to the rear providing access to Castlereagh Street. The premises are serviced

Price : Contact Agent
Building Size : 58 sqm
View : <https://www.drakeproperty.com/lease/nsw/sydney-city/sydney/commercial/offices/6768679>



Joy Huang
02 9283 6280



Suite 703, 370 Pitt Street, Sydney

This information is not to be relied upon.
It is strictly for marketing & illustration purposes only.
All measurements are approximate. Not to scale.
No liability accepted.
You must rely on your own inquiries and seek advice from your solicitor. (ID 446524)

