



Level GF/284 Pitt Street Sydney NSW

- * Approx. 57.8sqm
- * Fully equipped with grease trap & exhaust
- * Great street exposure to Pitt Street
- * High foot traffic from World Square, Town Hall Station, Meriton, etc
- * Suitable for cafe, fast food, boutique dine-in, general retail etc

284 Pitt Street is conveniently located on the corner of Pitt St and Bathurst St, with short walk to Town Hall Station and World Square amenity. International House, two brick buildings merged, seven storeys of offices with shops at street level, built circa 1925. The building was refurbished in December 2000.

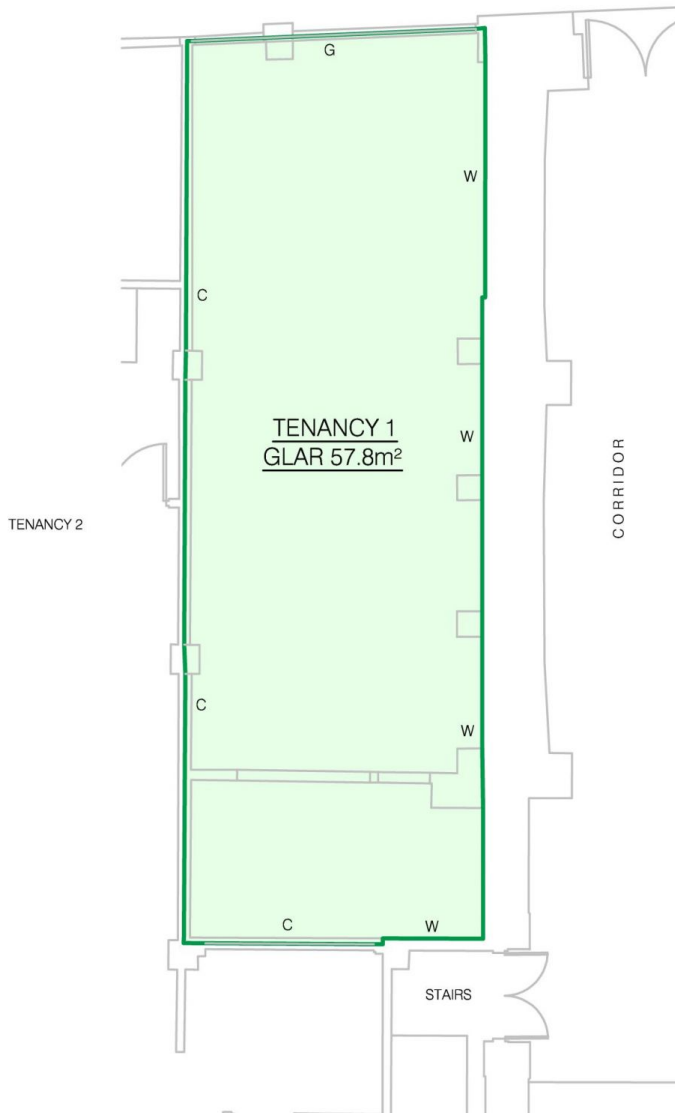
For inspections, please contact David on 0492 929 791.

Price : Contact Agent
Building Size : 58 sqm
View : <https://www.drakeproperty.com/lease/nsw/sydney-city/sydney/commercial/retail/7166428>

**PLAN OF GROSS LETTABLE AREA RETAIL (GLAR)
TENANCY 1, GROUND FLOOR
284 PITT STREET, SYDNEY, NSW**



PITT STREET



LEGEND

- C TENANCY BOUNDARY IS CENTERLINE OF WALL
- G TENANCY BOUNDARY IS FACE OF GLASS
- W TENANCY BOUNDARY IS FACE OF WALL

CMS C.M.S. Surveyors Pty. Ltd.
SURVEYORS A.C.N 096 240 201

PO Box 463 Dee Why NSW 2099
2/99A South Creek Road, Dee Why NSW 2099
Phone: (02) 9971 4802 Fax: (02) 9971 4822
E-mail: info@cmssurveyors.com.au

- NOTES**
- AREAS AND TENANCY BOUNDARIES HAVE BEEN DEDUCED IN ACCORDANCE WITH, AND UNDER INTERPRETATION OF THE 'PROPERTY COUNCIL OF AUSTRALIA' METHOD OF MEASUREMENT, REVISED EDITION MARCH 1997 (REPRINTED 2008) PART 1, GROSS LETTABLE AREA RETAIL (G.L.A.R.)
 - ALL PARTIES USING THE AREAS EXPRESSED UPON THIS SKETCH SHOULD AGREE WITH THE BOUNDARY DELINEATIONS.

SURVEYED DT	DRAWN GP
CHECKED DT	DATE OF SURVEY 3/09/2017
SURVEY INSTRUCTION 17447	SCALE 1:100@ A4
DRAWING NAME 17447-TENANCY 1-GLAR-001	ISSUE 1
CAD FILE 17447-TENANCY 1-GLAR-001.dwg	