

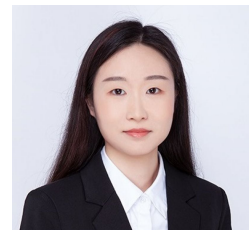


**Level 17/1709/87 Liverpool Street Sydney NSW**

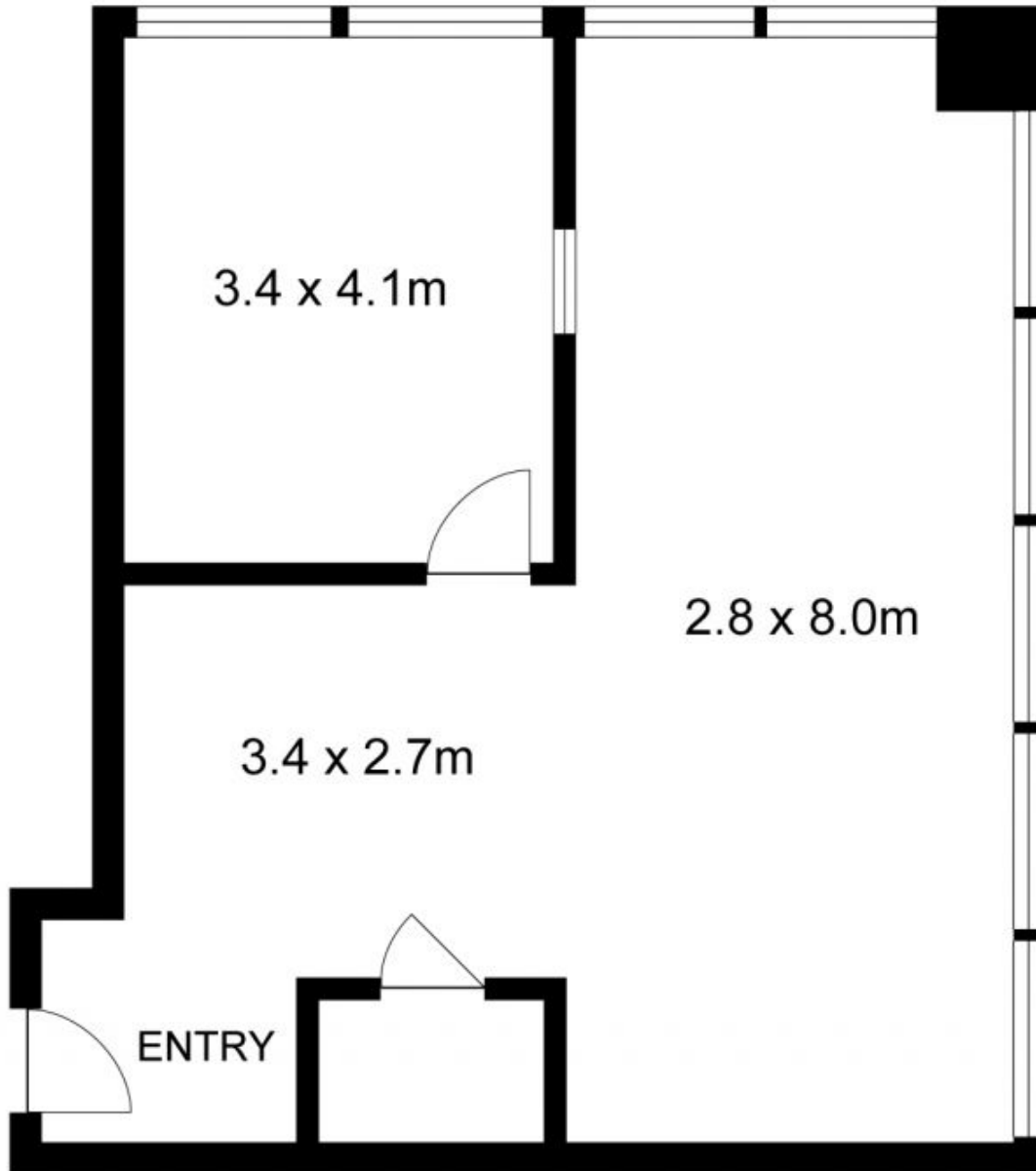
- \* Approx. 56m2
- \* 1 partitioned room and open space
- \* Quality fit out
- \* Brand new carpet (no the one in the photo)
- \* Individual air conditioning
- \* Access to World Tower resort facilities (swimming pool, gym, sauna etc)
- \* Minutes to Town Hall, Museum, Courts, Chinatown and Darling Harbour

87 Liverpool Street is the commercial section of the prominent World Tower complex and adjacent to the prestigious World Square retail and commercial development. High quality finishes include three lifts, security access, separately air-conditioned suites with intercom, male and female amenities and common kitchen. Access to the luxurious World Tower recreational facilities.

**Price** : Contact Agent  
**Building Size** : 56 sqm  
**View** : <https://www.drakeproperty.com/lease/nsw/sydney-city/sydney/commercial/offices/7264975>



**Joy Huang**  
02 9283 6280



Scale in metres. Indicative only. Dimensions are approximate. All information contained herein is gathered from sources we believe to be reliable. However we cannot guarantee its accuracy and interested persons should rely on their own enquiries.

Suite 1709/87 Liverpool Street, Sydney