

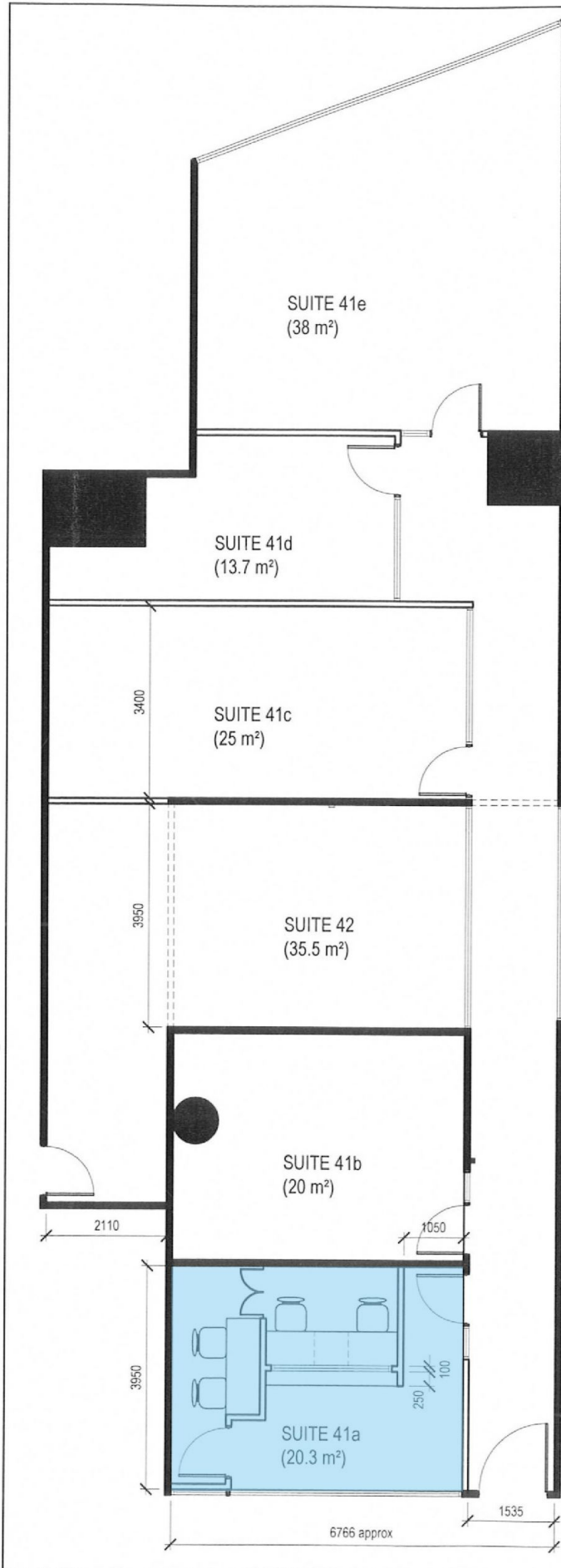
Level 3/41A/650 George Street Sydney NSW

Starting up a business?
Need a little creative space in the vibrant World Square?
Here is your new office ready for you to move in immediately.

- Approx. 20.3sqm
- Open plan
- 24hr security access
- High ceiling
- Great position

Please contact David on 0492 929 791 or Joy on 0420 314 838 for inspections.

Price : Contact Agent
Building Size : 20 sqm
View : <https://www.drakeproperty.com/lease/nsw/sydney-city/sydney/commercial/offices/7304437>



SUITE 41e
(38 m²)

SUITE 41d
(13.7 m²)

SUITE 41c
(25 m²)

SUITE 42
(35.5 m²)

SUITE 41b
(20 m²)

SUITE 41a
(20.3 m²)

PARTITION LEGEND

- FULL HEIGHT SOLID
- FULL HEIGHT GLASS

Legend

CLIENT
GEOFF LOWE & ASSOCIATES
 Suite 41, 650 George Street
 Sydney NSW 2000

AXIOM Fitout Group
 31 Richmond Road
 Homebush West NSW 2140
 Phone: (02) 9746 0101

(C) COPYRIGHT. THIS DOCUMENT IS OWNED BY, AND THE INFORMATION CONTAINED IN IT IS PROPRIETARY TO AXIOM OFFICE INTERIORS. BY RECEIPT HEREOF THE HOLDER AGREES NOT TO USE THE INFORMATION, DISCLOSE IT TO ANY THIRD PARTY, NOR REPRODUCE THIS DOCUMENT WITHOUT PRIOR WRITTEN CONSENT OF AXIOM OFFICE INTERIORS, AND AGREES TO RETURN THIS DOCUMENT FORTHWITH UPON REQUEST. CONTRACTOR TO VERIFY DIMENSIONS PRIOR CONSTRUCTION. DO NOT SCALE OFF DRAWING.

DATE	02.03.2009	DRAWN		AL
SCALE	1 : 100	DRAWING NO.	CE-01	REVISION
QUOTE SCHEDULE NO.	Q 07227	JOB NO.	H-	
DWG TITLE				
OFFICE LAYOUT				