



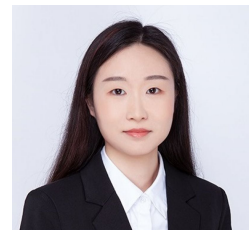
## Level 10/96/420 Pitt Street Sydney NSW

- \* Approx. 83m<sup>2</sup>
- \* Reception area, three glass partitioning rooms and abundant open area
- \* Quality fit out
- \* Brand new painting and LED lights
- \* Close to Central Station, Family Court, World Square
- \* Bright natural light with Pitt Street view
- \* Located in busy Thai Town area
- \* Floor utilities include kitchenette and disable toilet
- \* Gym with shower and WC in the building
- \* Suitable for any office environment

420-426 Pitt Street is a 27 storey building comprising 108 mixed residential apartments, 20 commercial offices and 3 retail stores.

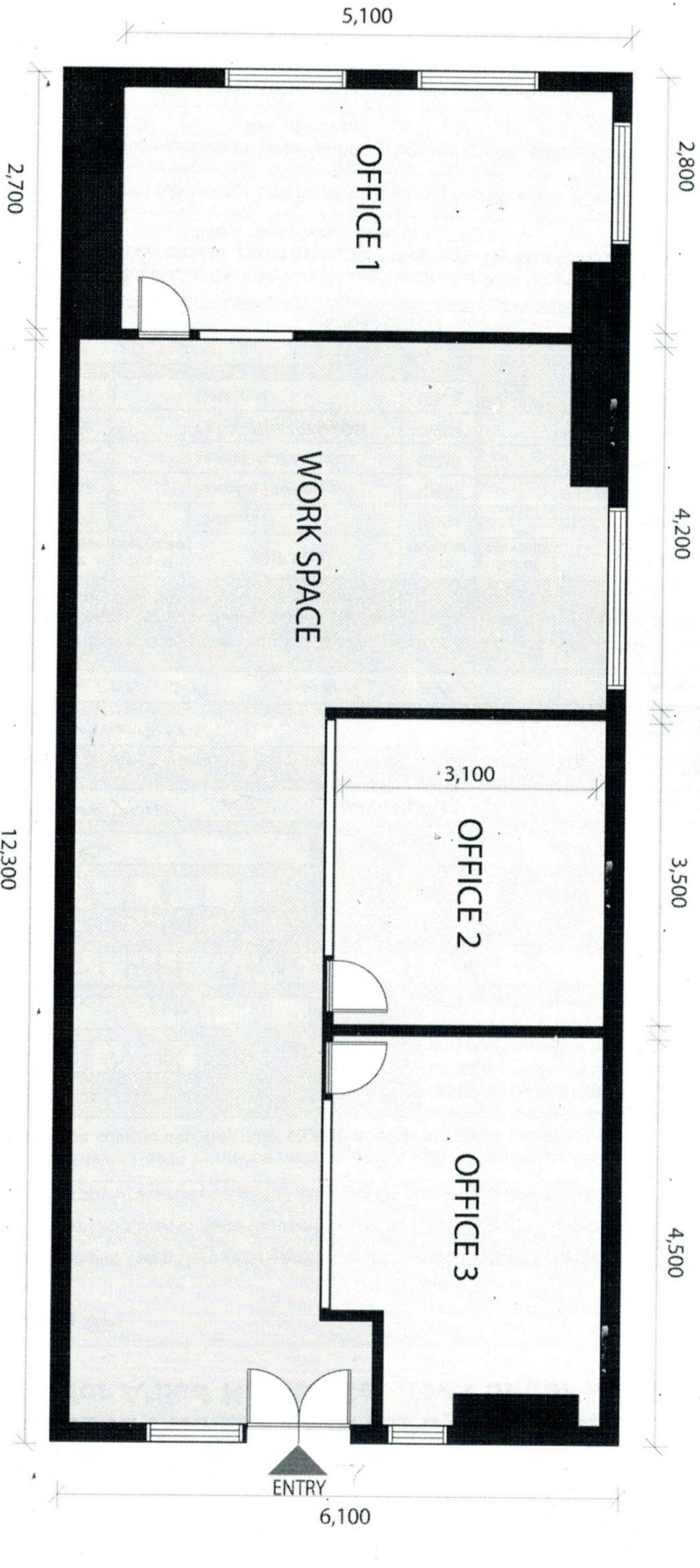
For more information or arranging inspections, please

**Price** : Contact Agent  
**Building Size** : 83 sqm  
**View** : <https://www.drakeproperty.com/lease/nsw/sydney-city/sydney/commercial/offices/7369031>



**Joy Huang**  
02 9283 6280

PITT STREET



Total area: 84m<sup>2</sup> (Approx.)

Level 9

# Suite 96 420 Pitt Street Sydney

NOT TO SCALE, ALL MEASUREMENTS ARE APPROXIMATE METRES, DRAWN FOR PRESENTATION PURPOSES ONLY  
DISCLAIMER: While care has been taken in the preparation of these particulars, no responsibility is accepted for the accuracy of the whole or any part and interested persons are advised to make their own enquiries and satisfy themselves in all respects.