

Level 5/457/311 Castlereagh Street Sydney NSW

- * Approx. 87m2
- * 18sqm lock up garage on the same level
- * 3 partitioned offices, reception area and open space
- * Individual air conditioning
- * Direct lift exposure
- * 2 lifts newly installed
- * Kitchen with water supply
- * Building amenities include indoor swimming pool, heated spa/sauna, table tennis and gym
- * Close to Museum Station, Central Station and Local Courts

Price : Contact Agent
Building Size : 87 sqm
View : <https://www.drakeproperty.com/lease/nsw/sydney-city/sydney/commercial/offices/7448920>

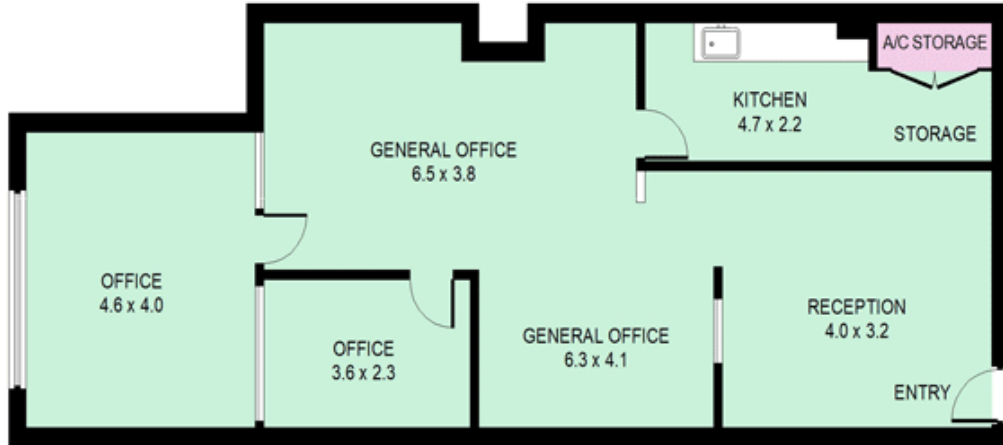
This suite is situated on Level 5, directly facing the lift, with internal size of 89m2, plus lockup garage. Natural light flows through wide windows. Modern reception, generous open space with 2 partitioned offices. Air conditioned. It has



Joy Huang
02 9283 6280



LEVEL 5



LEVEL 5

Suite 457, 311 Castlereagh Street, Sydney



This information is not to be relied upon.
It is strictly for marketing & illustration purposes only.
All measurements are approximate. Not to scale.
No liability accepted.
You must rely on your own inquiries and seek advice from your solicitor.(ID 509625)