



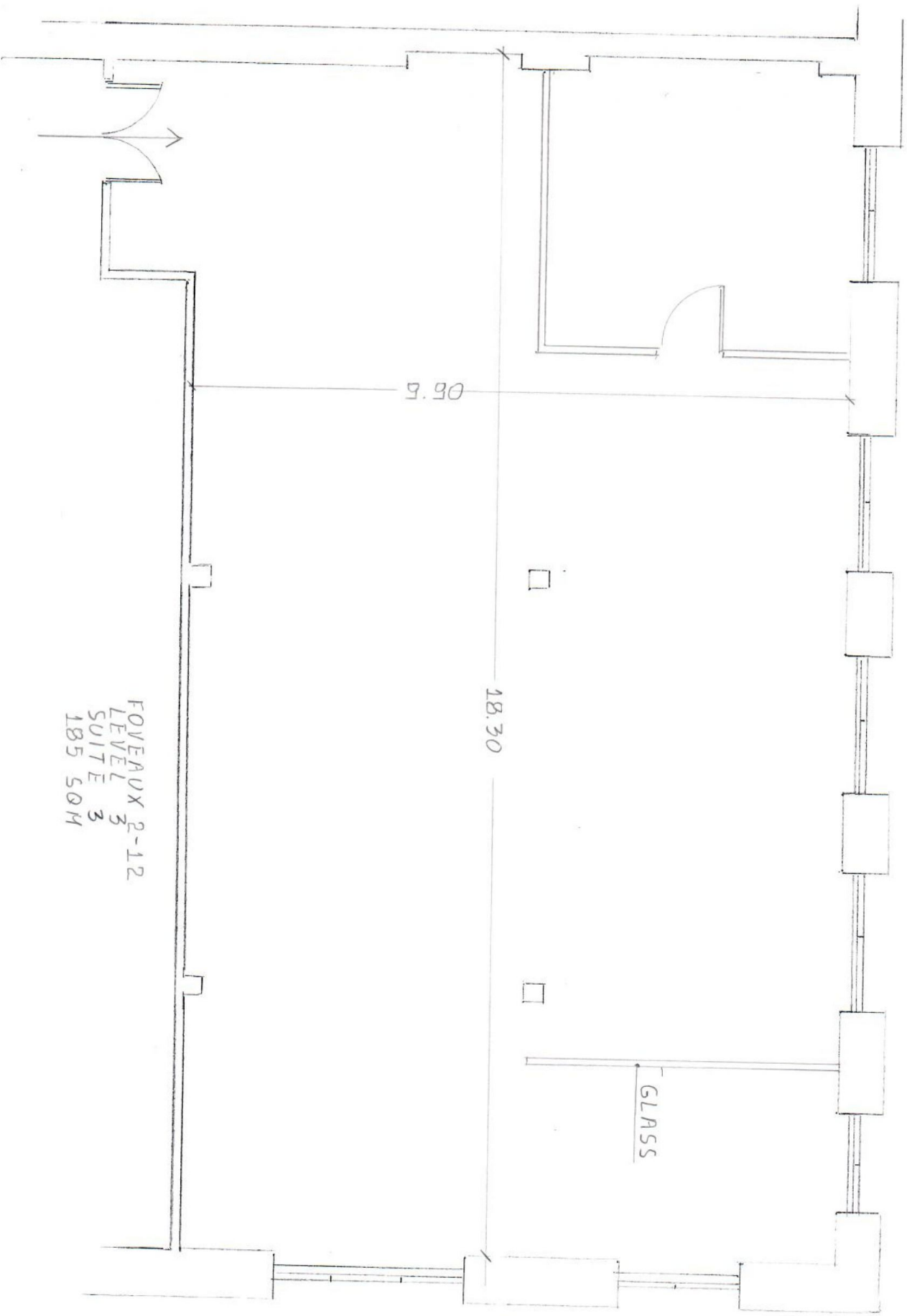
Level 3/2-12 Foveaux Street Surry Hills NSW

2 - 12 Foveaux Street is a converted warehouse style office building located at the corner of Mary Street close to Central Station. The building offers on - site building management and excellent proximity to public transport, cafes, bars and eateries

- * Approx. 185sqm
- * Extra high ceilings
- * Ample natural light
- * Polished timber floor
- * A minute's walk from Central Station
- * Close to all restaurants and bars

Price : Contact agent
Building Size : 185 sqm
View : <https://www.drakeproperty.com/lease/nsw/eastern-suburbs/surry-hills/commercial/offices/7557435>

For further information, please call David on 0492 92 97 91.



FOVEAUX 2-12
LEVEL 3
SUITE 3
185 50M