



## Level 1/270/398 Pitt Street Sydney NSW

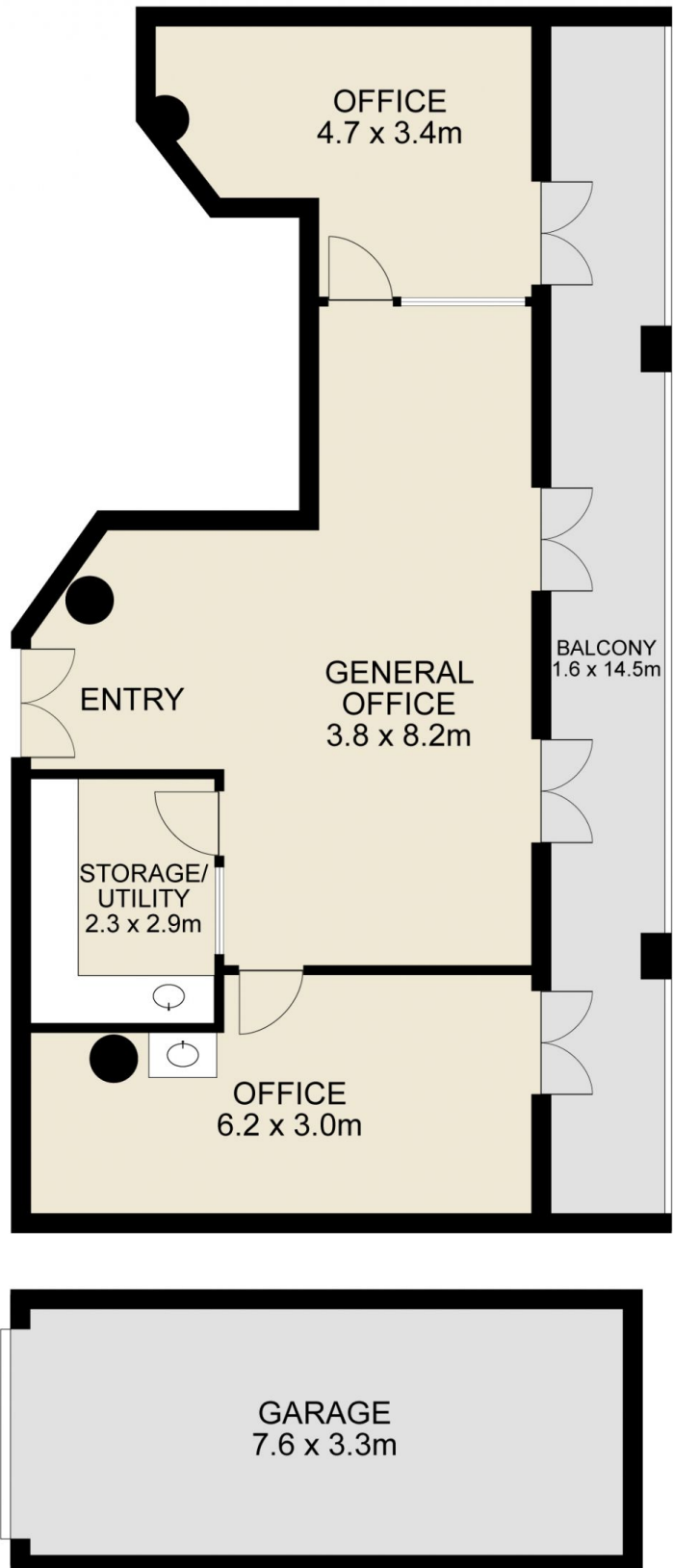
This property is located on the eastern side of Pitt Street and is within five minutes walking of Central Station. It is in the vicinity of the Law Courts, Thai Town, China Town, and World Square.

- \* Quality office suite with floor to ceiling windows
- \* Abundant natural light
- \* Large spacious balcony overlooking Pitt Street
- \* Well configured open plan office with two executive offices + tea facilities
- \* Exceptionally high ceilings incorporating heritage features
- \* Prime location two minutes to World Square retail precinct
- \* Major Sydney legal precinct
- \* Up & coming IT hub of the Sydney CBD
- \* Lock up garage on the same title C.23m<sup>2</sup>
- \* Full amenities including swimming pool + gym
- \* Minutes from Central Railway Station, Bus & Light Rail

**Price** : Contact Agent  
**Building Size** : 87 sqm  
**View** : <https://www.drakeproperty.com/sale/nsw/sydney-city/sydney/commercial/offices/7591533>



**Joy Huang**  
02 9283 6280



Scale in metres. Indicative only. Dimensions are approximate. All information contained herein is gathered from sources we believe to be reliable. However we cannot guarantee its accuracy and interested persons should rely on their own enquiries.

Suite 270, 398 Pitt Street, Sydney