

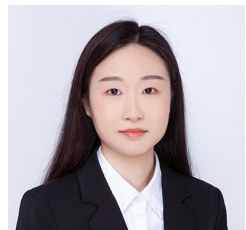


229 Commonwealth Street Surry Hills NSW

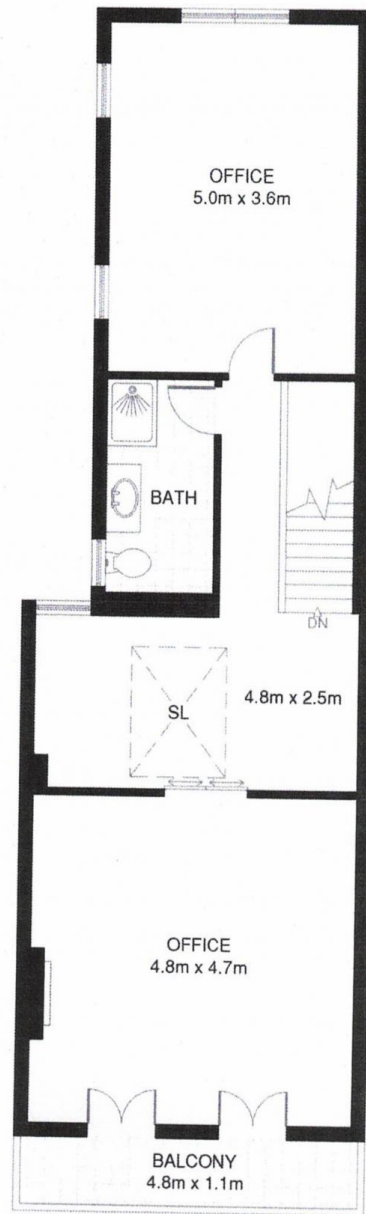
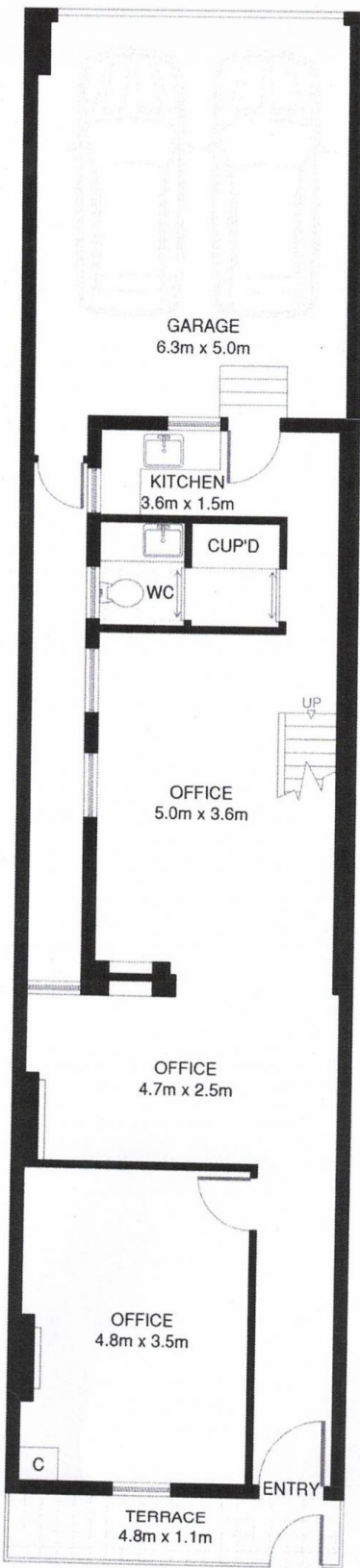
- * Two storey commercial terrace
- * Approx. 173sqm
- * Asking rent \$8,500 per month plus GST
- * Two off street car spaces
- * Available March 2024

Price : \$8,500 plus GST per month
Building Size : 173 sqm
View : <https://www.drakeproperty.com/lease/nsw/eastern-suburbs/surry-hills/commercial/offices/7815290>

For further information or arranging inspections, please call David 0492 92 97 91.



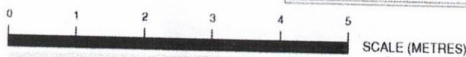
Joy Huang
02 9283 6280



FIRST FLOOR

SURRY HILLS
299 COMMONWEALTH STREET
FLOOR AREA APPROX 173m²

Current floor plan



*PLANS SHOWN ONLY INDICATIVE OF LAYOUT. DIMENSIONS ARE APPROXIMATE.
Floor plan supplied by V-Mark Design Pty Ltd. This floor plan is provided for indicative purposes only.
Measurements are approximate and not to scale. The vendor, agency and supplier will accept no liability for its accuracy. Interested parties are advised to make their own independent enquiries.