



Level 6/601/155 Castlereagh Street Sydney NSW

Property particulars:

- Approx. 116m2
- Affordable rent
- Fit-out including reception area, board room and offices in addition to an open area
- Recently renovated with new painting, new carpet and brand new LED lights
- Close to Town Hall, Pitt St Mall, World Square etc
- Available now

Description

14 storey building plus a shopping arcade at street level, upgraded in 1984 and since strata subdivided into 33 lots. The building is serviced by two lifts and its amenities is located on each floor, including toilets and a tea room.

Location

Price

: Contact Agent

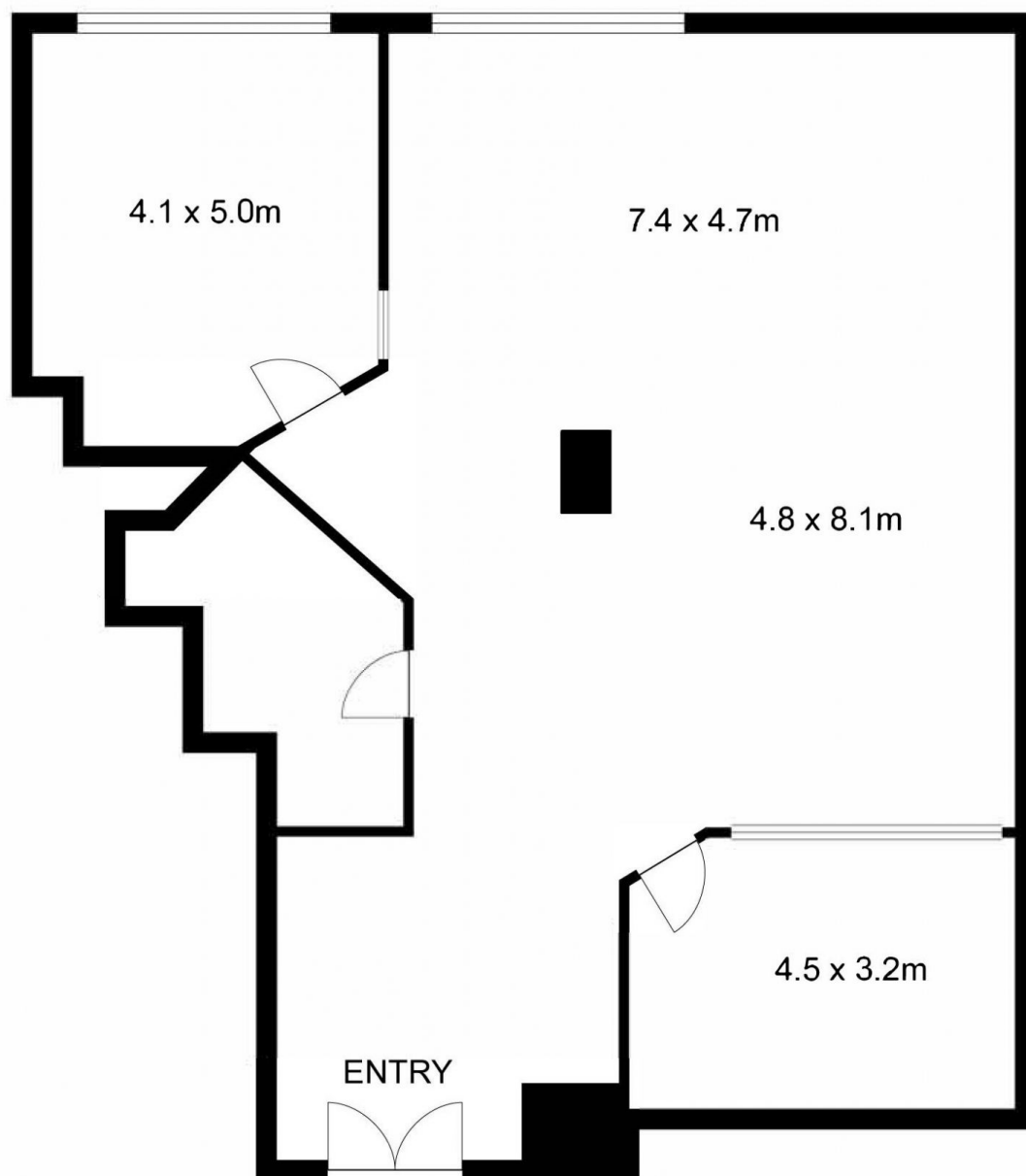
Building Size View

: 116 sqm

: <https://www.drakeproperty.com/lease/nsw/sydney-city/sydney/commercial/offices/7933533>



Joy Huang
02 9283 6280



Scale in metres. Indicative only. Dimensions are approximate. All information contained herein is gathered from sources we believe to be reliable. However we cannot guarantee its accuracy and interested persons should rely on their own enquiries.

601/155 Castlereagh Street, Sydney