



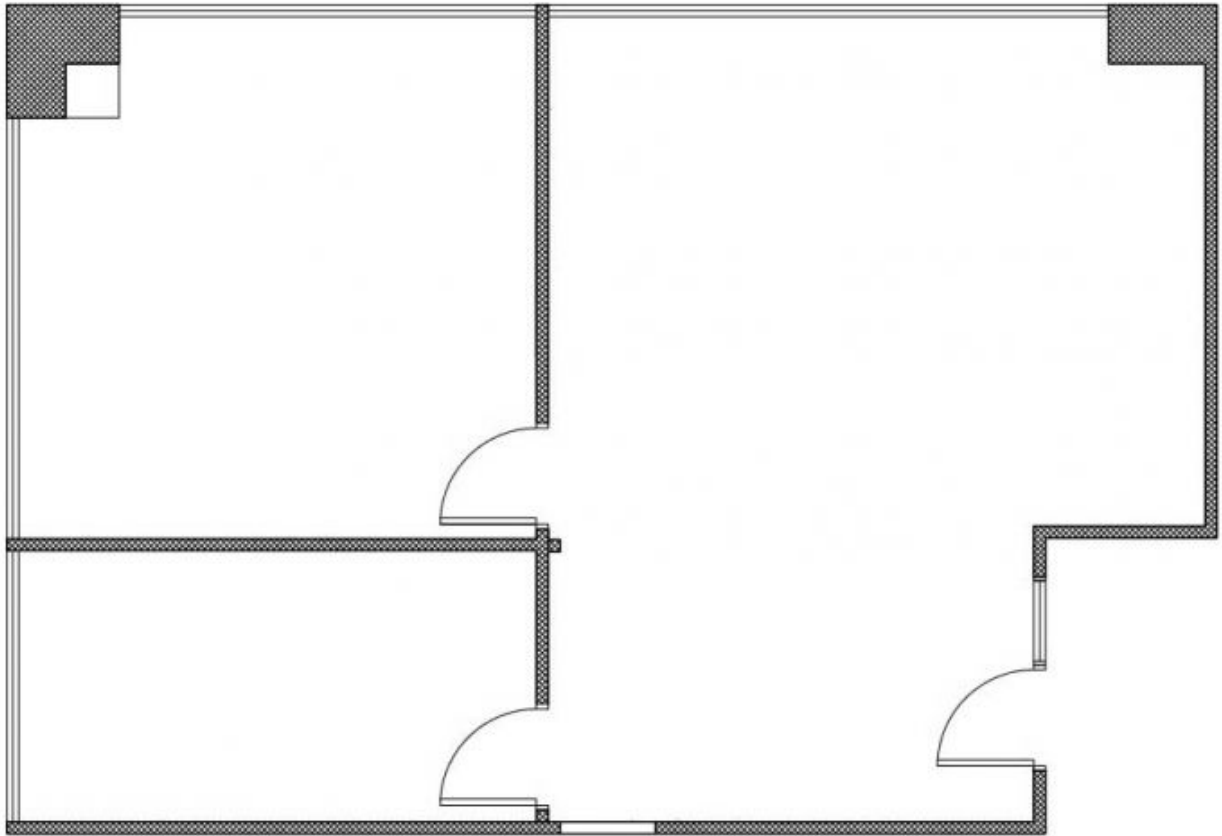
**Level 11/1106/370 Pitt Street Sydney NSW**

- \* Approx. 64sqm
- \* Ample natural light
- \* Two partitioning rooms plus a reception area
- \* Close to Town Hall, Local Courts and World Square
- \* Quality fit out

**Price** : Contact Agent  
**Building Size** : 64 sqm  
**View** : <https://www.drakeproperty.com/lease/nsw/sydney-city/sydney/commercial/offices/7962257>

The Chambers is an 18 story building comprising 15 office floors above 2 retail floors and a shopping arcade which inter-connects with the property to the rear providing access to Castlereagh Street. The premises are serviced by high speed elevators and are of superb quality.

Please contact David on 0492 929 791 for inspection.



Scale 1:50 @ A3. Estimates only. Please take your own measurements. No assurance these are correct.