

**Level 4/2/104-112 Commonwealth Street Surry Hills NSW**

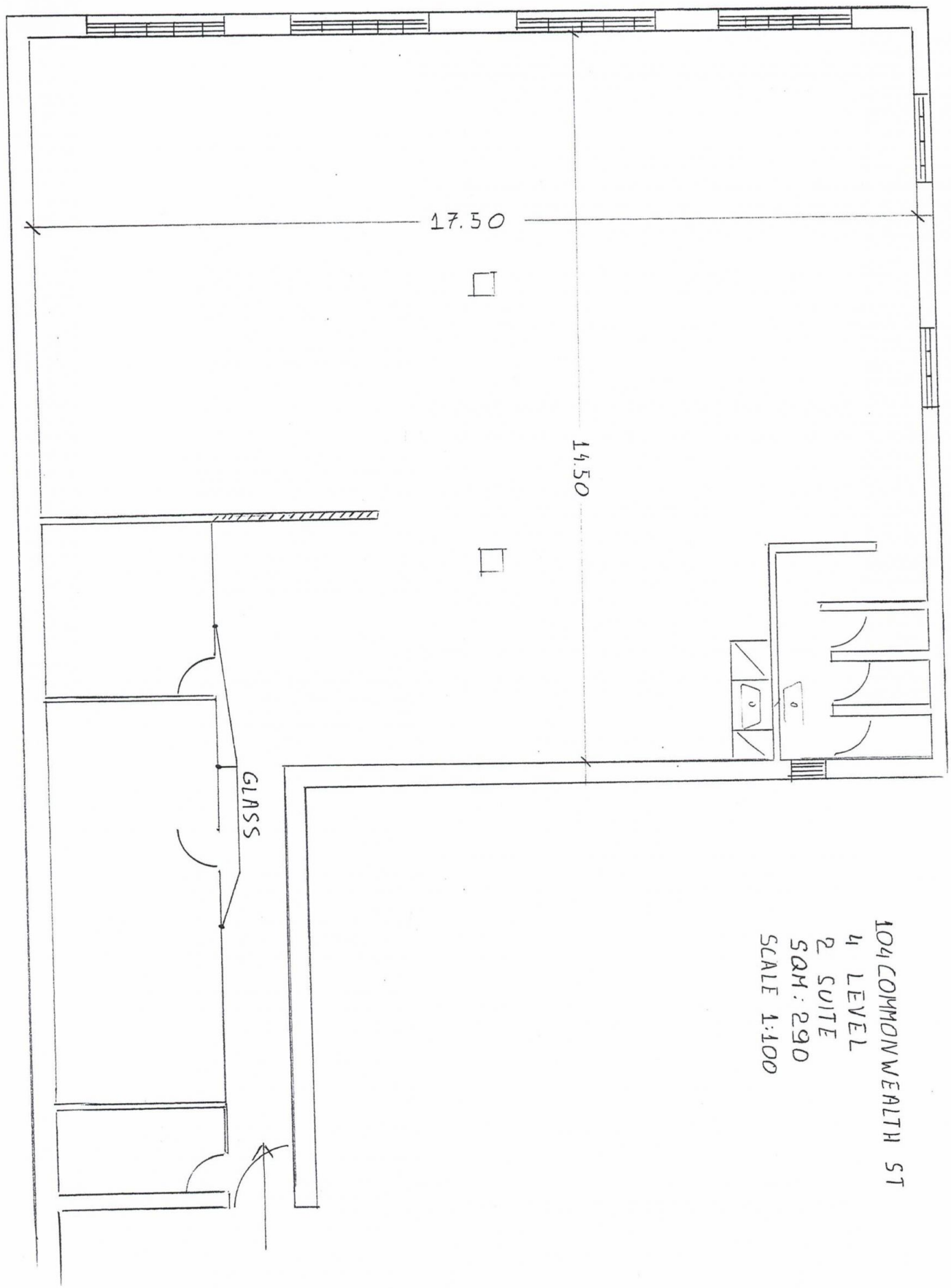
Warehouse Style Office at Surry Hills

- \* Approx. 290sqm
- \* Extra High Ceilings
- \* Internal Wet Kitchen and Shower Room
- \* Natural Light
- \* Boutique, Creative Space
- \* Newly Renovated
- \* Vibrant Urban Lifestyle
- \* Car space if required \$500 per month plus GST

104 Commonwealth is Located in the Heart of Surry Hills, within walking distance to bustling Surry Hills, CBD and Central Station.

For detailed info, please contact David 0492 92 9791.

**Price** : \$15,900 plus GST pm  
**Building Size** : 290 sqm  
**View** : <https://www.drakeproperty.com/lease/nsw/eastern-suburbs/surry-hills/commercial/offices/7978974>



104 COMMONWEALTH ST  
4 LEVEL  
P. SUITE  
SQM: 290  
SCALE 1:100