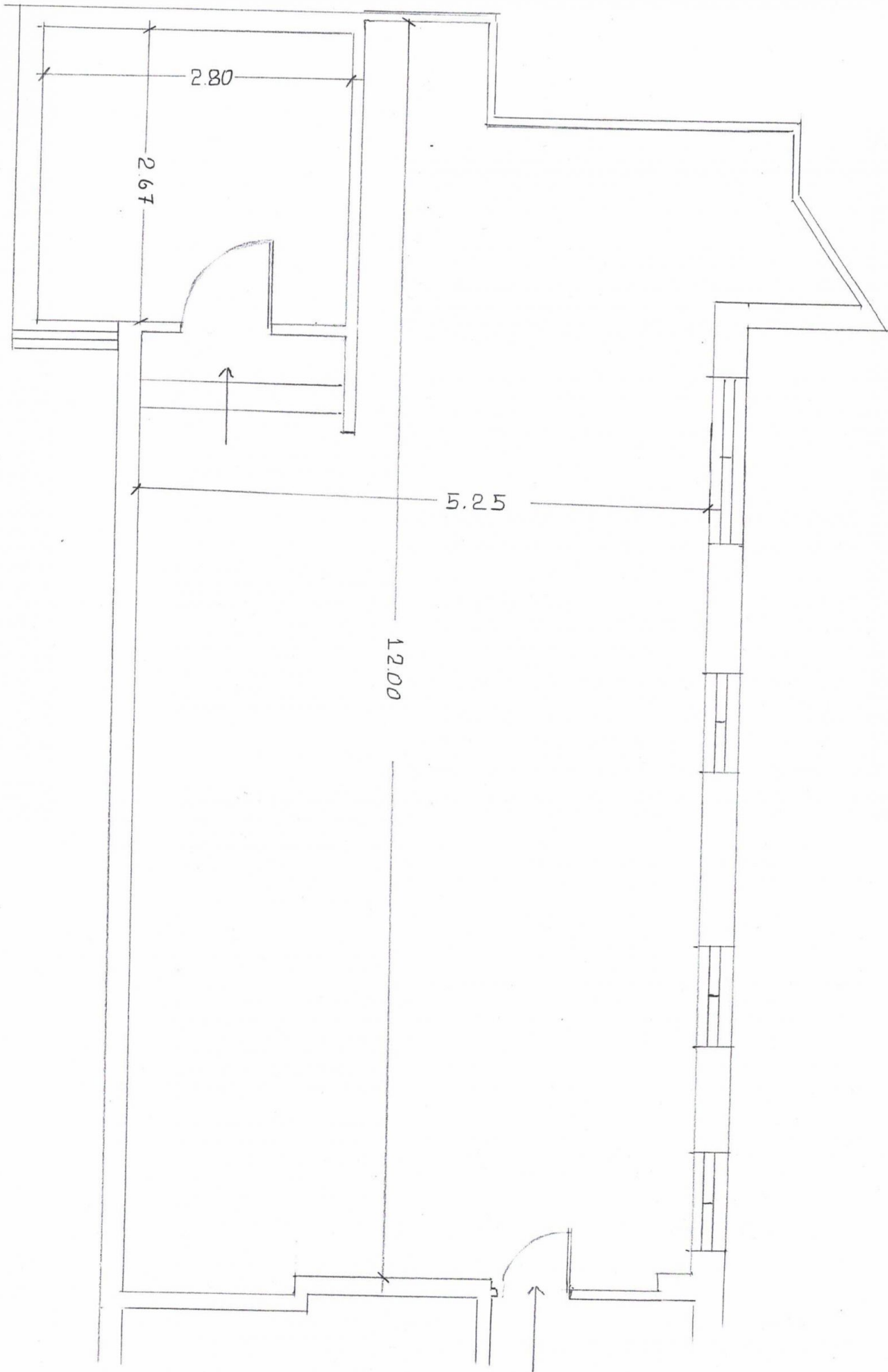


Level 1/104/661 George Street Sydney NSW

- * Approx. 70.5sqm
- * Lift and stair access
- * Toilets in common area
- * Suitable for general offices, PTE, private tutoring and upper floor retail
- * Close to Chinatown, Market City, UTS, Central Station, Thai Town etc
- * Available now

Price : \$3,100 plus GST per month
Building Size : 70 sqm
View : <https://www.drakeproperty.com/lease/nsw/sydney-city/sydney/commercial/offices/7978976>

Please call David on 0492 92 9791 or Joy on 0420 314 838 for more information.



GEORGE ST 661
LEVEL 1
SUITE 104
SQM: 70.50