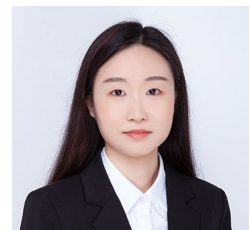




Level 3/1/104-112 Commonwealth Street Surry Hills NSW

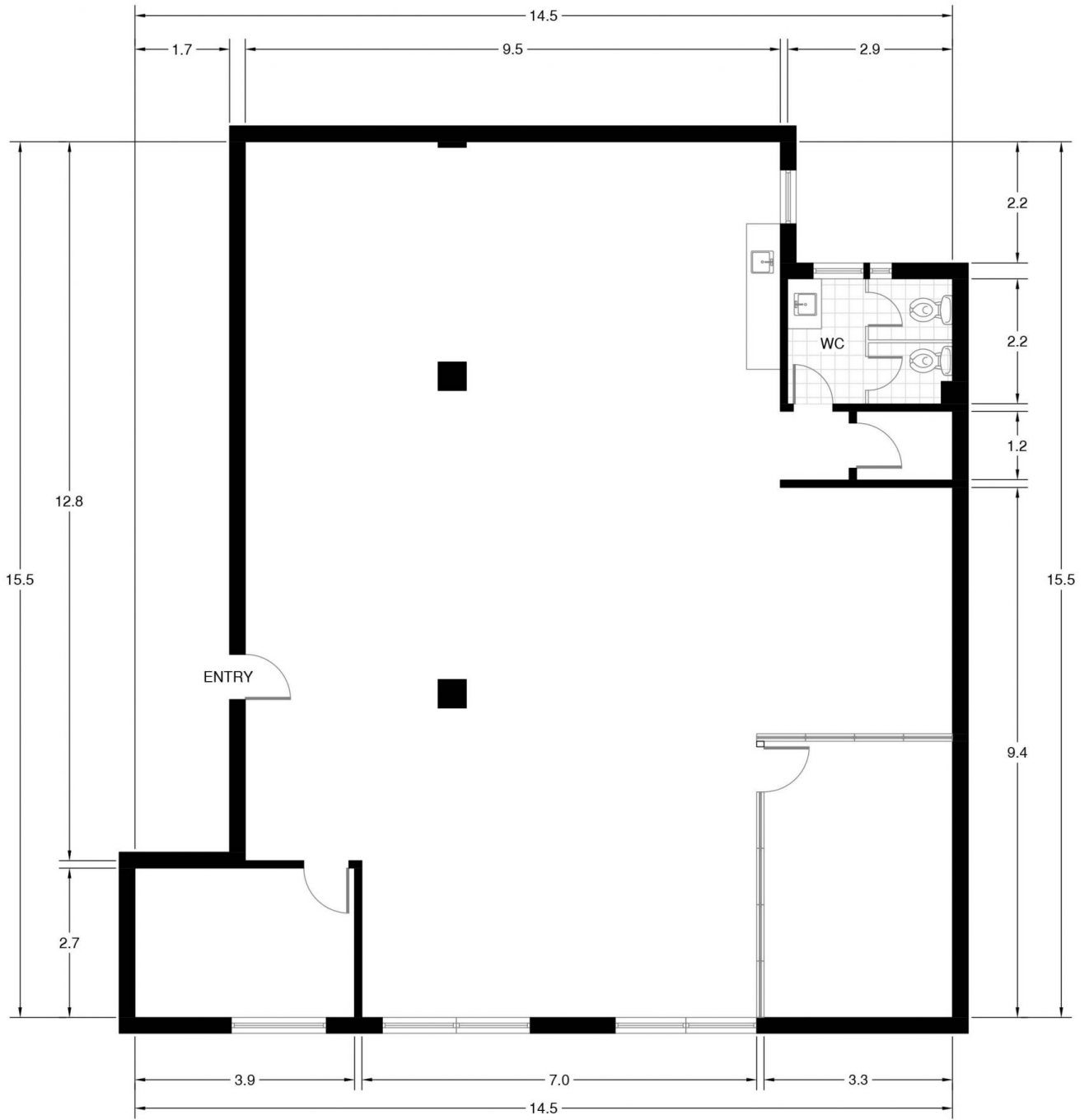
- * Extra High ceilings
- * Ample Natural Light
- * Boutique and Creative Space
- * Two Partitioned Rooms, Open Area and Bathroom
- * Polished Timber Floor
- * Vibrant urban lifestyle
- * Asking rent \$12,000 plus GST per month
Garbage fee \$220 plus GST per month

Type : Offices
Price : Contact Agent
Building Size : 192 sqm
View : <https://www.drakeproperty.com/lease/nsw/eastern-suburbs/surry-hills/commercial/offices/8603412>



Joy Huang
02 9283 6280

[For full version visit the website](https://www.drakeproperty.com)



SURRY HILLS SUITE 1 LEVEL 3/104-106 COMMONWEALTH STREET

*INTERNAL FLOOR AREA APPROX 192m²



*PLANS SHOWN ONLY INDICATIVE OF LAYOUT. DIMENSIONS ARE APPROXIMATE.

Floor plan supplied by V-Mark Design Pty Ltd. This floor plan is provided for indicative purposes only.

Measurements are approximate and not to scale. The vendor, agency and supplier will accept no liability for its accuracy. Interested parties are advised to make their own independent enquiries.