

Level WB/133 Regent Street Chippendale NSW

2 

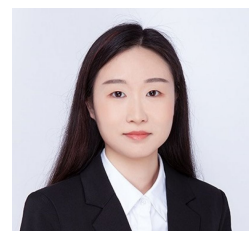
- * Approx. 150m2
- * Double storey premises
- * Double lock up garage access from rear lane
- * Functional kitchen & bathroom with a shower
- * Brand new floor covering
- * Zoning: mixed use

Type : Retail
Price : Contact Agent
Building Size : 150 sqm
View : <https://www.drakeproperty.com/sale/nsw/sydney-city/chippendale/commercial/retail/8641937>

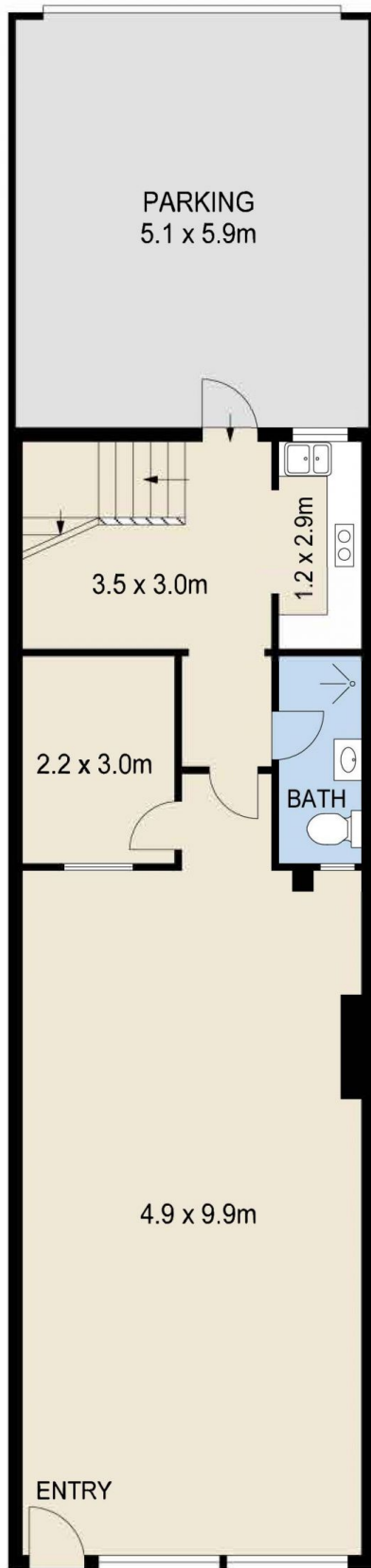
Location

This premises is located on a main road being Regent Street. With lots exposure this would suit small business, advertising, printing company etc.

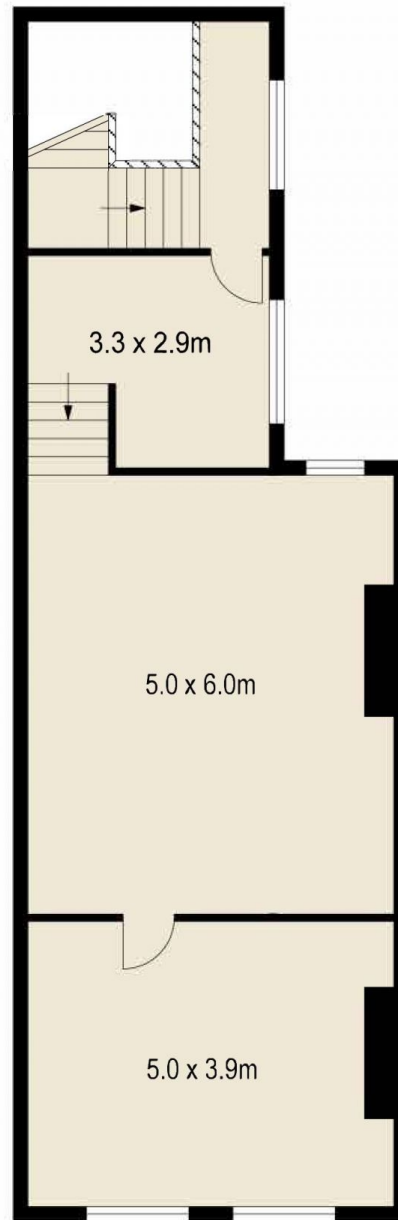
Please contact David on 0492 929 791 or Joy on 0420 314 838 for inspections or detailed information.



Joy Huang
02 9283 6280



GROUND FLOOR



FIRST FLOOR



TOTAL: 150 m²

Scale in metres. Indicative only. Dimensions are approximate. All information contained herein is gathered from sources we believe to be reliable. However we cannot guarantee its accuracy and interested persons should rely on their own enquiries.

133 Regent Street, Chippendale