

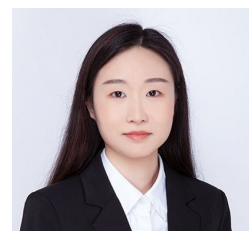
**Level 3/42/650 George Street Street Sydney NSW**

Starting up a business?  
Need a little creative space in the vibrant World Square?  
Here is your new office ready for you to move in immediately:

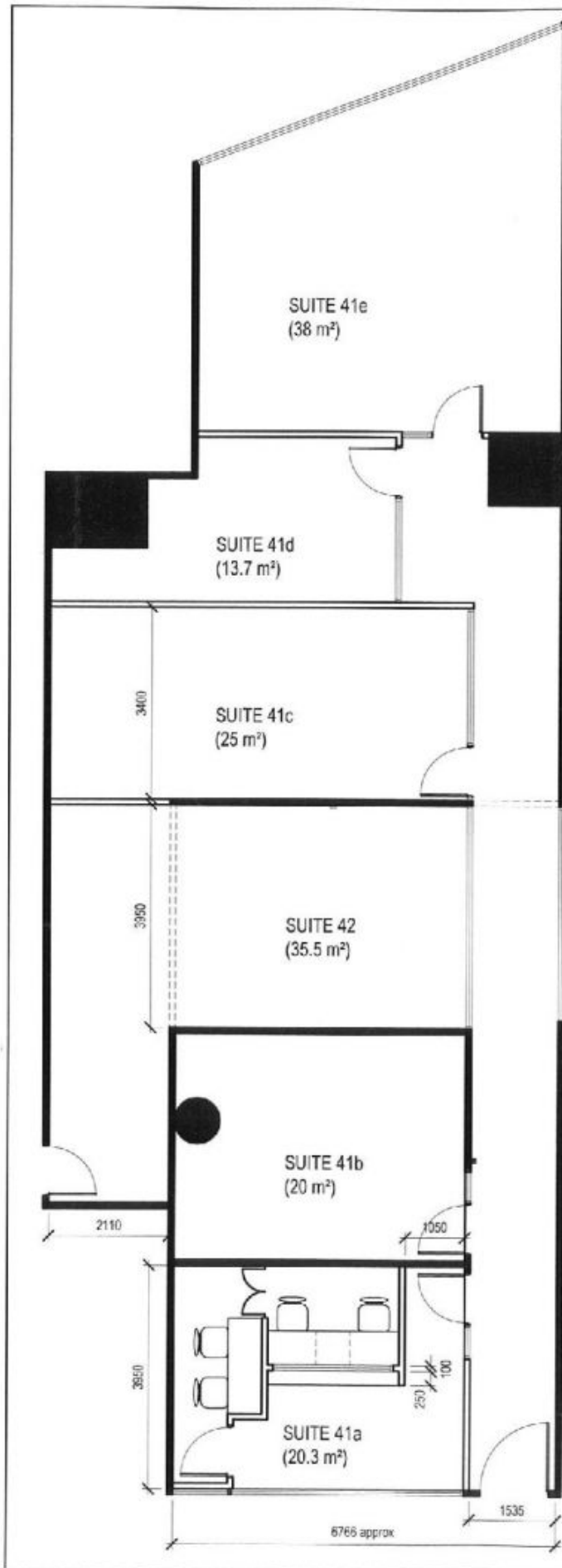
- 35.5sqm approx.
- L shape office
- Two entrances
- Outgoings and ELECTRICITY included in rent
- 24hr security access
- High ceiling

Please contact Joshua on 0408 422 771 for inspection.



**Type** : Offices  
**Price** : Contract Agent  
**Building Size** : 35.5 sqm  
**Land Size** : 35.5 sqm  
**View** : <https://www.drakeproperty.com/lease/nsw/sydney-city/sydney/commercial/offices/8660253>



**Joy Huang**  
02 9283 6280



**PARTITION LEGEND**

-  FULL HEIGHT SOLID
-  FULL HEIGHT GLASS

**Legend**

CLIENT  
**GEOFF LOWE & ASSOCIATES**  
 Suite 41, 650 George Street  
 Sydney NSW 2000

**AXIOM** Fitout Group  
 31 Richmond Road  
 Homebush West NSW 2140  
 Phone: (02) 9746 0101

(C) COPYRIGHT. THIS DOCUMENT IS OWNED BY, AND THE INFORMATION CONTAINED IN IT IS PROPRIETARY TO AXIOM OFFICE INTERIORS. BY RECEIPT HEREOF THE HOLDER AGREES NOT TO USE THE INFORMATION, DISCLOSE IT TO ANY THIRD PARTY, NOR REPRODUCE THIS DOCUMENT WITHOUT PRIOR WRITTEN CONSENT OF AXIOM OFFICE INTERIORS, AND AGREES TO RETURN THIS DOCUMENT FORTHWITH UPON REQUEST. CONTRACTOR TO VERIFY DIMENSIONS PRIOR TO CONSTRUCTION. DO NOT SCALE OFF DRAWING.

DATE	02.03.2009	DRAWN	AL
SCALE	1 : 100	DRAWING NO.	CE-01
QUOTE SCHEDULE NO.	Q 07227	REVISION	A
DWG TITLE	OFFICE LAYOUT		