

Level 17/1710/87 Liverpool Street Sydney NSW

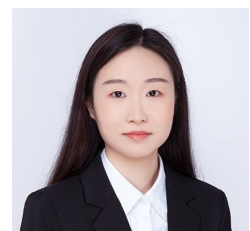


- * Approx. 72m2 internal area plus a car space and a storage (18m2)
- * 4 partitioned rooms
- * 1 partitioned room with a separate entrance
- * Quality fit out
- * Individual air conditioning
- * Access to World Tower resort facilities (swimming pool, gym, sauna etc)
- * Minutes to Town Hall, Museum, Local Courts, Chinatown and Darling Harbour

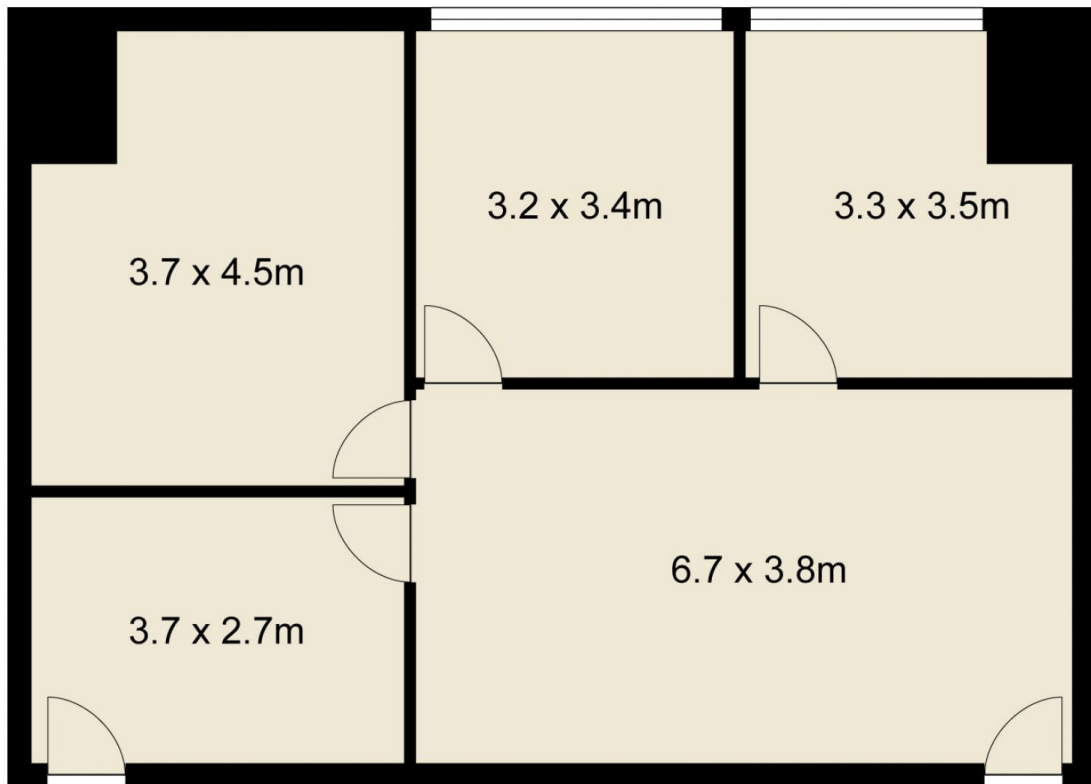
87 Liverpool Street is the commercial section of the prominent World Tower complex and adjacent to the prestigious World Square retail and commercial development. High quality finishes include three lifts,

Type : Offices
Price : Contact Agent
Building Size : 72 sqm
View : <https://www.drakeproperty.com/sale/nsw/sydney-city/sydney/commercial/offices/8689030>

[For full version visit the website](#)



Joy Huang
02 9283 6280



Scale in metres. Indicative only. Dimensions are approximate. All information contained herein is gathered from sources we believe to be reliable. However we cannot guarantee its accuracy and interested persons should rely on their own enquiries.

1710, 87 Liverpool Street, Sydney